

Dear RX-Z11/DSP-Z11 owner,

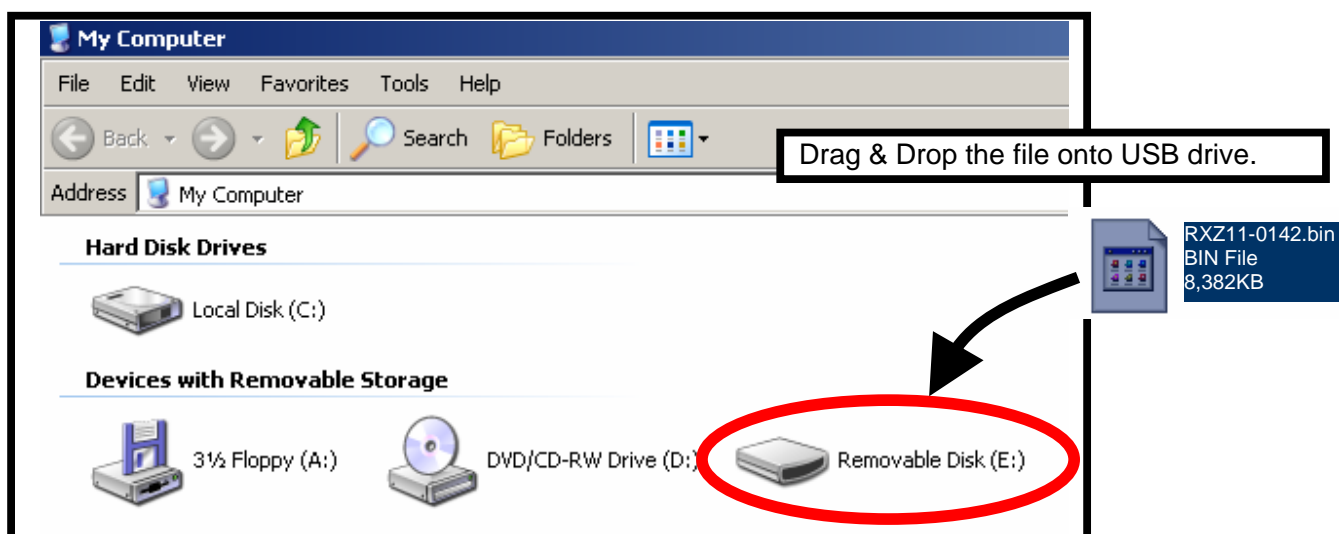
Follow the procedures below to properly update your Z11's firmware. After the update, you will be able to confirm that the update was done successfully.

Requirements:

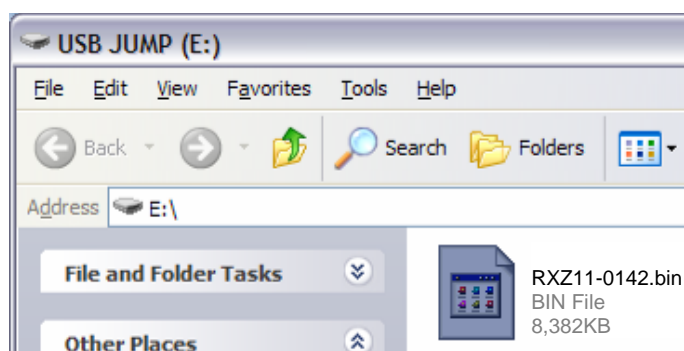
- 1) USB flash drive (empty), with enough free space to hold 8.4 MB.
- 2) New firmware file provided by YAMAHA, **RXZ11-0142.bin**.

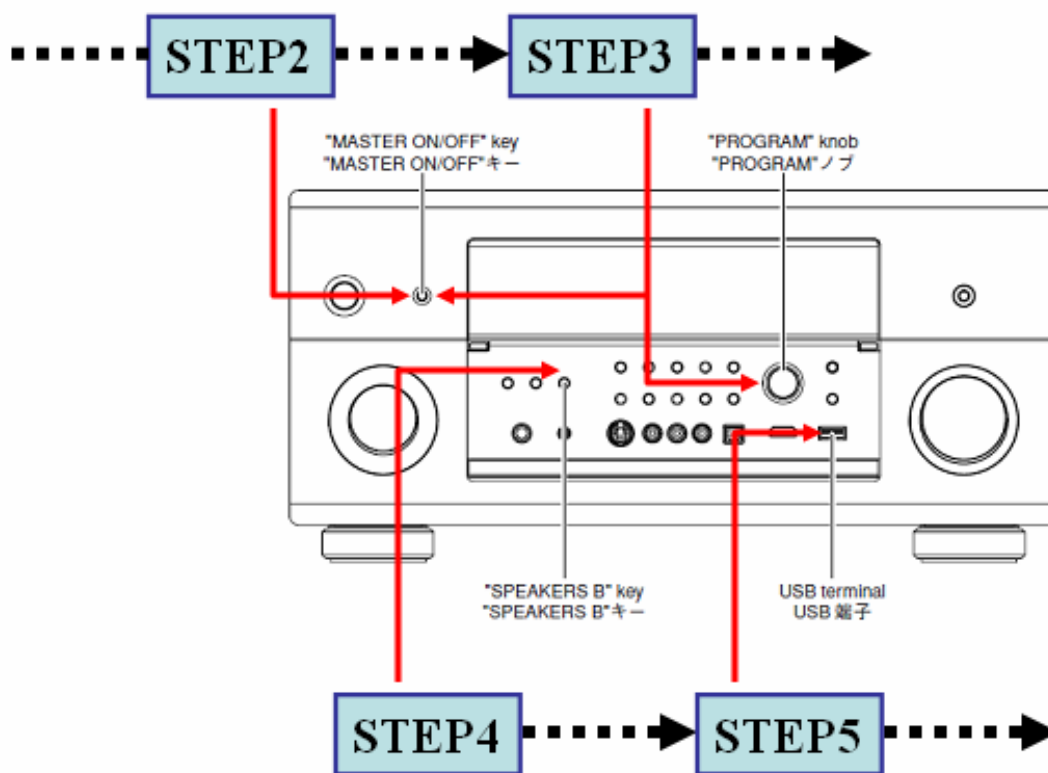
Procedure:

1. Copy or Drag & Drop the firmware file “**RXZ11-0142.bin**” onto the root folder of your USB flash drive on PC.
(Note: We recommend that you **DO NOT** store any other files or documents on your thumb drive during this firmware update)



This is an example after copy or Drag & Drop onto USB drive.



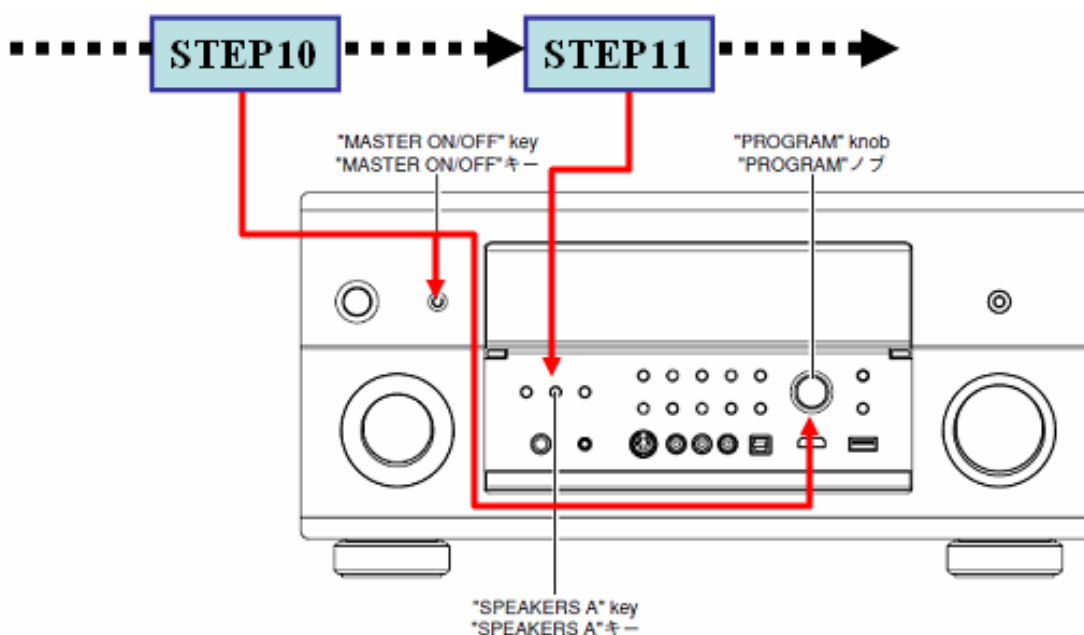


2. Set the **MASTER ON/OFF** button on the front panel to OFF, and confirm that the AC plug is properly connected to an outlet.
3. While pressing the **PROGRAM** knob, press (and release) the **MASTER ON/OFF** button and then keep depressing the **PROGRAM** knob until "**ADVANCED SETUP**" appears on the front panel display. (Note: the "**ADVANCED SETUP**" is only displayed for a few seconds, after which time the speaker impedance setting is displayed. "**SPEAKER IMP. 8MIN**")
4. Press and hold **SPEAKERS B** button for about 3 seconds. "**USB FirmUpdate Push SP.B key!**" will appear on the front panel display.
5. Insert the USB thumb drive in the USB terminal located on the front panel.
6. To start the firmware update, press the **SPEAKERS B** button again.



Firmware reprogramming is in progress

7. When “**UPDATE OK**” appears on the display, firmware update is completed.
8. Power OFF the unit by pressing **MASTER ON/OFF** button on the front panel.
9. Unplug the USB thumb drive.



Confirmation of Firmware Update

10. While pressing the **PROGRAM** knob, press (and release) the **MASTER ON/OFF** button and then keep depressing the **PROGRAM** knob until “**ADVANCED SETUP**” appears on the front panel display.
11. Press and hold **SPEAKERS A** button for about 3 seconds. VERSION and SUM will appear on the front panel display. Confirm that they match with the following:



If the Version and Sum don't match, firmware update has not been performed correctly. Check that the data is in the root of your USB thumb drive and retry procedure from STEP 2.

12. Power OFF the unit by pressing **MASTER ON/OFF** button on the front panel.

CONGRATULATIONS, your Z11 now has the latest firmware.

Recovery TIPS in case your update has not been successful:

Case#1

Instead of “UPDATE OK”, “FirmUpdate, push MENU key” appeared on the display.

This occurs when the program area of the update data inside the USB thumb drive is partially corrupted.
To recover,

1. Unplug the USB thumb drive from the Z11 and copy the update data again.
2. Insert the USB thumb drive in the USB terminal on the front panel.
3. Start firmware update by pressing the **MENU** button.
4. When “**UPDATE OK**” appears on the display, firmware update is completed.
5. Power OFF the unit by pressing **MASTER ON/OFF** button on the front panel.
6. Unplug the USB thumb drive.

Case#2

“the flash memory VER.ERR” appeared on the display.

This occurs when the program area of the update data inside the USB thumb drive is partially corrupted.
To recover,

1. Press MENU button. “**FirmUpdate, push MENU key**” will appear on the display.
2. Unplug the USB thumb drive and copy the update data again.
3. Insert the USB thumb drive in the USB terminal on the front panel.
4. Start firmware update by pressing the **MENU** button.
5. When “**UPDATE OK**” appears on the display, firmware update is completed.
6. Power OFF the unit by pressing **MASTER ON/OFF** button on the front panel.
7. Unplug the USB thumb drive.

Case#3

The Sum value doesn’t match.

This occurs when the data area of the USB thumb drive is partially corrupted.
To recover,

1. Replace USB thumb drive with a different one.
 2. Then, follow the original update procedure.
-