



Electone® **STAGEA**®

ELS-01/01C Version 1.6 New Functions

Yamaha has updated the firmware of the ELS-01/01C as Version 1.6. This version provides additional functions and has some changed LCDs. This manual provides the instructions for new functions. The “Reference Page” on the outside margin indicates the relevant page number of the ELS-01/01C Owner’s Manual. Refer to the Owner’s Manual also. (ELS-01/01C Owner’s Manual is the manual for Version 1.0.)

Contents

Music Data Recorder (MDR)	page 2
Recalling Recorded Registrations	page 2
Moving a Protected Song	page 3
Rhythm Sequence Program	page 4
Programming Next Regist in Registration Sequence	page 4
Internet Direct Connection	page 6
Confirming the Connection	page 6
Wireless LAN Connection Settings	page 7

Music Data Recorder (MDR)

Recalling Recorded Registrations



Reference Pages

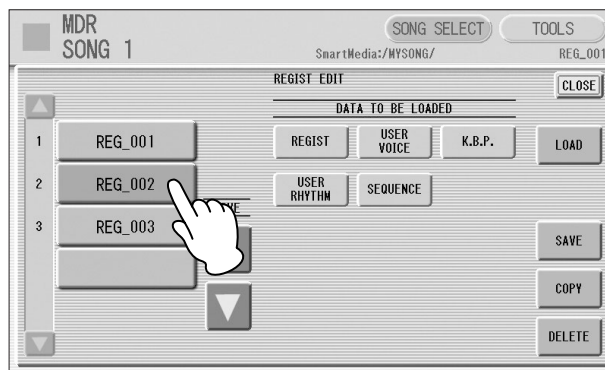
Recalling Recorded Registrations (page 111)

The M.D.R. independently records the following five types of data:

- REGIST: Registration data (data recorded in the Registration Memory)
- USER VOICE: User voices and VA custom voices
- K.B.P.: Keyboard Percussion settings
- USER RHYTHM: User rhythms
- SEQUENCE: Rhythm Sequences (including Registration Sequences)

In the Regist Edit display, you can select and recall the desired data independently.

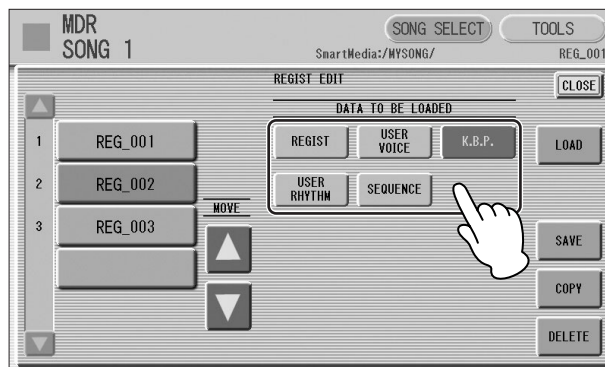
- 1 Select the song you want to load back (recall) to the Electone.**
For details on selecting a song, see page 96 of the Owner's Manual.
- 2 Press the [REGIST EDIT] button in the SONG SELECT Page to call up the Regist Edit display.**
- 3 Select the Registration you want to load to the Electone.**



NOTE

When you load the Registration data by using the Next Regist function, all data will be loaded no matter which buttons you select here.

- 4 Using the five "DATA TO BE LOADED" buttons, select the desired data you want to load.**



- 5 Press the [LOAD] button to load the selected data in the Registration.
- 6 Exit from the Regist Edit display by pressing the [CLOSE] button at the top right of the display.

When you select the protected song, the buttons (DATA TO BE LOADED) may be unavailable (grayed out). This is for protecting the copyright. For example, combining a part of one protected song with another protected song is not allowed.

Moving a Protected Song

This function lets you move a Protected Song to another folder or another SmartMedia card by using the [SONG COPY] button. Although the [SONG COPY] button is used here, the song will not actually be copied; it will only be moved. The procedure is the same as that of the Song Copy operation. See page 118 of the Owner's Manual.



Reference Page

About Protected Songs
(page 121)

ELS-01C Song Icon

Note that there is a new icon for songs created with the ELS-01C.



Indicates a song that has been created with the ELS-01C or the ELS-01X.

Storage Media for Protected Songs

On the ELS-01/01C version 1.6 or later, it is possible to save protected songs to USB flash memory.

Rhythm Sequence Program

Programming Next Regist in Registration Sequence



Reference Pages

Next Regist Settings (page 109)
Programming a Registration Sequence (page 175)

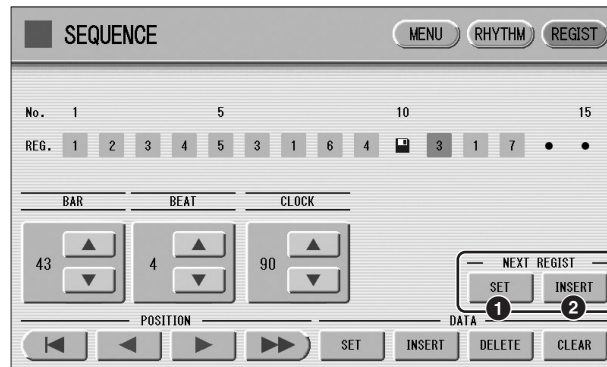


NOTE

If you are loading a Registration while a rhythm is playing, the sequence data and User rhythms in the Registration data cannot be loaded.

You can program the Next Regist function in Registration Sequences. Using this function, the next registration data in current song can be loaded automatically just by playing the rhythm sequence.

Registration Sequence display



1 SET

For replacing a Registration number (or Next Regist) at the cursor position to Next Regist. This button is useful when you want to change the timing of the Next Regist function. For details, see next page.

2 INSERT

For entering Next Regist data in the Registration Sequence.

Entering Next Regist



NOTE

Although you move the cursor to the Next Regist mark in the display, the next registration data will not be loaded.

1 Using the buttons in the display or the Data Control dial, set the Bar/Beat/Clock position at which you want to enter the Next Regist (1 beat = 96 clock).

2 Press the NEXT REGIST [INSERT] button in the display. The Next Regist mark () appears in the display in the timing you set in step #1, indicating that the Next Regist is entered.

Editing an Existing Next Regist

You can move the entered Next Regist, or delete the Next Regist from the sequence.

To move an entered Next Regist:

- 1 Move the cursor and select the Next Regist you want to move.
- 2 Change the position by pressing the Bar/Beat/Clock buttons in the display.
- 3 Press the NEXT REGIST [SET] button in the display.
The Next Regist position is changed and displayed in the proper order.

To erase an entered Next Regist:

- 1 Move the cursor and select the Next Regist you want to delete.
- 2 Press the [DELETE] button to delete the Next Regist.

Next Regist Loading Time

- Loading Next Regist may take a few seconds (the time may differ depending on the size of the data to be loaded).
- When using a floppy disk instead of SmartMedia card, the loading time will be longer than when using SmartMedia.
- Next Registration data can be loaded by two ways: using right footswitch and programming Next Regist in the Registration Sequence. Loading time is the same regardless of which way you load the Next Registration data.

Internet Direct Connection





Confirming the Connection

You can confirm the wireless LAN connection and the condition of accessing websites.



① Wireless LAN indicator

When you connect the Electone to Internet using wireless LAN, an icon indicating the condition of the connection is displayed. If the signal to the Electone becomes weak or there is no signal from the access point, move the Electone nearer to the access point.

- : Strong
- : Normal
- : Weak (not connected to Internet)
- : No signal (not connected to Internet)

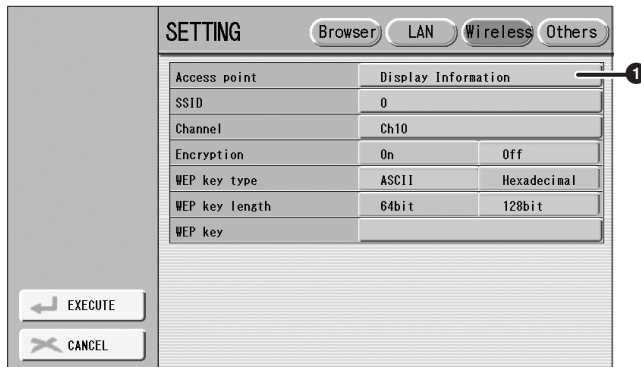
② Communication status indicator

The following three messages will be shown depending on the status of accessing web site.

Now opening web page ...	Indicates loading of the web page.
Web page has been displayed.	Indicates the web page has been loaded and the web page is completely displayed.
Disconnected.	Indicates the Electone is offline (not connected to Internet).

Wireless LAN Connection Settings

On the Wireless LAN Page of the Internet Settings Display, a new item has been added. With this new function, certain settings are entered automatically—letting you can quickly and easily connect the Electone to the Internet by using a wireless LAN connection.



1 Access Point

Pressing the [Display Information] button calls up the access point list. It shows the access points near the Electone.

Once you select the desired access point and press the [OK] button, a message appears prompting confirmation of whether to transfer the access point settings to the Electone or not. When you select [YES], the SSID, Channel and Encryption settings are transferred to the Electone.



Reference Page

Wireless LAN (page 197)



NOTE

If no signal from the access point is received, the access point cannot be listed.



NOTE

The WEP key type, length and WEP key are not entered automatically. You have to enter them by yourself if you want to use an access point that is encrypted.



NOTE

An access point that is encrypted in a non-WEP format cannot be used.

