

Installation Series

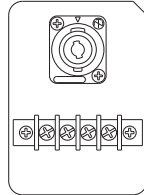
Speaker System



IF2112



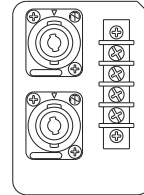
IF2112 (M)
Rear Panel



IF2112/AS



IF2112/AS
Rear Panel



IF2112

IF2112M

IF2112/AS

Two-way full-range models with 12-inch woofers deliver extraordinarily well-balanced sound.

- Sound and phase characteristics matched with all other Installation Series models for optimum performance in any combination.
- 12" woofer specially treated for superior sound and durability.
- 3" high-frequency compression driver with 1.4" exit (IF2112 and IF2112/AS) or 1.7" high-frequency compression driver with 1.4" exit (IF2112M).
- Three horn dispersion patterns available for IF2112 and IF2112M: 60° x 40° (/64), 90° x 50° (/95), and 90° x 90° (/99).
- Horn can be rotated 90-degrees for vertical or horizontal mounting.
- Switchable between passive and bi-amp operation.
- Fifteen 10-mm (M10) screw and four 8-mm (M8) screw suspension points provided for flexible rigging on the IF2112 and IF2112M; 16 10-mm screw (M10) points on the IF2112/AS.
- Durable black or white finish (can be painted to match any interior).
- Optional matching array frame and U-bracket available for the IF2112 and IF2112M.
- Optional matching U-bracket available for the IF2112/AS.
- Parallel-wired Neutrik NL4 and barrier strip connectors.
- IF2112/AS cabinet design is ideal for floor monitor use. Also features pole socket* for pole mounting.

*Warning when using the pole socket

Make sure that the pole is mounted vertically when you mount the speaker to the pole.

Please refer to the Owner's Manual for details.

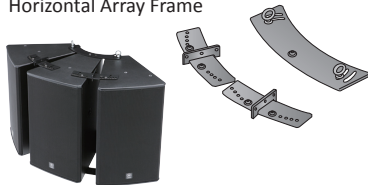
OPTIONS

Accessories

Durable black or white finish which can be painted to match any interior.

HAF3-2112

Horizontal Array Frame

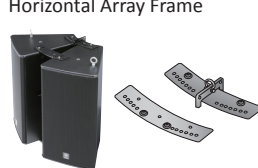


Weight:
9kg (19.8lbs)

*available for IF2112 and IF2112M

HAF2-2112

Horizontal Array Frame

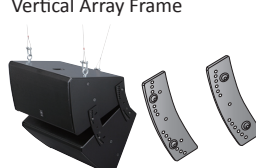


Weight:
4kg (8.8lbs)

*available for IF2112 and IF2112M

VAF2-2112

Vertical Array Frame

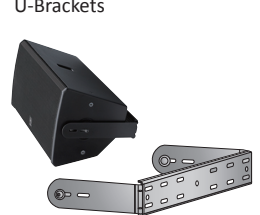


Weight:
4kg (8.8lbs)

*available for IF2112 and IF2112M

UB2112

U-Brackets



Weight:
4kg(8.8lbs)

Download the Rigging Guide from Yamaha's website for rigging details:
<http://www.yamahaproaudio.com/>

Installation Series

GENERAL SPECIFICATIONS

Model	IF2112/64		IF2112/95	IF2112/99	IF2112/AS	
Nominal coverage @-6dB (Horizontal x Vertical)	60°x 40 (rotatable)		90 x 50 (rotatable)	90 x 90	60-100 x 60 (rotatable)	
Nominal impedance	Passive	8 Ω				
	Bi-amp MF/HF	LF:8 Ω , HF:8 Ω				
Power rating	Passive *1	NOISE	600W			
		PGM	1200W			
		MAX	2400W			
	Bi-amp LF/HF *2	NOISE	LF:700W, HF:110W			
		PGM	LF:1400W, HF:220W			
MAX		LF:2800W, HF:440W				
Sensitivity (1W, 1m)	Passive	96dB SPL				
	Bi-amp	LF	96dB SPL			
		HF	110dB SPL	108dB SPL	106dB SPL	108dB SPL
Continuous SPL (calculated)	Passive	124dB SPL				
	Bi-amp	LF	124dB SPL			
		HF	130dB SPL	128dB SPL	126dB SPL	128dB SPL
Peak SPL (calculated)	Passive	130dB SPL				
	Bi-amp	LF	130dB SPL			
		HF	136dB SPL	134dB SPL	132dB SPL	134dB SPL
Components	LF	12" woofer, 4" voice coil				
	HF	Rotatable constant directivity horn, 1.4" exit, 3" voice coil compression driver				
Frequency range (-10dB) *3	50Hz-20kHz		1.2kHz		1.1kHz	
Passive Crossover Frequency *4	90Hz		1.2kHz		1.1kHz	
Connectors	1 x NL4 and barrier strip, wired in parallel				2 x NL4 and barrier strip, wired in parallel	
Shape	30 degrees trapezoidal				Multi-angle wedge	
Dimensions (W x H x D)	378 x 695 x 454mm (14.9" x 27.4" x 17.9")				378 x 695 x 333mm (14.9" x 27.4" x 13.1")	
Weight	31.0kg (68.0lbs)				29.0kg (64lbs)	
Flying hardware	15 x M10, 4 x M8				16 x M10	
Optional accessories	UB2112, HAF2-2112, HAF3-2112, VAF2-2112				UB2112	
3rd Party	Omnimount (US)	120.0 series				-
Accessories	Multimount (US, Allen products)	120 series				-
	Powerdrive (UK)	120 series				-

*1 2 hours, IEC *2 AES *3 Bi-amp mode, Yamaha recommended DSP configuration, full-space *4 At this frequency, the transducers produce equal sound pressure levels.

Model	IF2112M/64		IF2112M/95	IF2112M/99	
Nominal coverage @-6dB (Horizontal x Vertical)	60 x 40 (rotatable)		90 x 50 (rotatable)	90 x 90	
Nominal impedance	Passive	8 Ω			
	Bi-amp MF/HF	LF:8 Ω , HF:8 Ω			
Power rating	Passive *1	NOISE	350W		
		PGM	700W		
		MAX	1400W		
	Bi-amp LF/HF *2	NOISE	LF:400W, HF:60W		
		PGM	LF:800W, HF:120W		
MAX		LF:1600W, HF:240W			
Sensitivity (1W, 1m)	Passive	95dB SPL			
	Bi-amp	LF	96dB SPL		
		HF	110dB SPL	108dB SPL	108dB SPL
Continuous SPL (calculated)	Passive	120dB SPL			
	Bi-amp	LF	121dB SPL		
		HF	128dB SPL	126dB SPL	126dB SPL
Peak SPL (calculated)	Passive	126dB SPL			
	Bi-amp	LF	127dB SPL		
		HF	134dB SPL	132dB SPL	132dB SPL
Components	LF	12" woofer, 3" voice coil			
	HF	Rotatable constant directivity horn, 1.4" exit, 1.7" voice coil compression driver			
Frequency range (-10dB) *3	55Hz-20kHz		1.1kHz		
Passive Crossover Frequency *4	1kHz		1.1kHz		
Connectors	1 x NL4 and barrier strip, wired in parallel				
Shape	30 degrees trapezoidal				
Dimensions (W x H x D)	378 x 695 x 454mm (14.9" x 27.4" x 17.9")				
Weight	28.0kg (61.0lbs)				
Flying hardware	15 x M10, 4 x M8				
Optional accessories	UB2112, HAF2-2112, HAF3-2112, VAF2-2112				
3rd Party	Omnimount (US)	120.0 series			
Accessories	Multimount (US, Allen products)	120 series			
	Powerdrive (UK)	120 series			

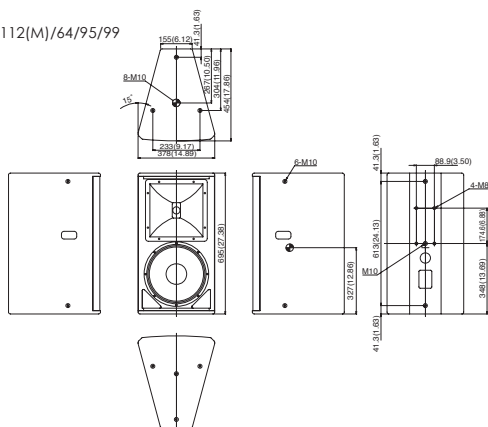
*1 2 hours, IEC *2 AES *3 Bi-amp mode, Yamaha recommended DSP configuration, full-space *4 At this frequency, the transducers produce equal sound pressure levels.

DIMENSIONS

unit : mm (inch)

● Center of balance

IF2112(M)/64/95/99



IF2112/AS

