

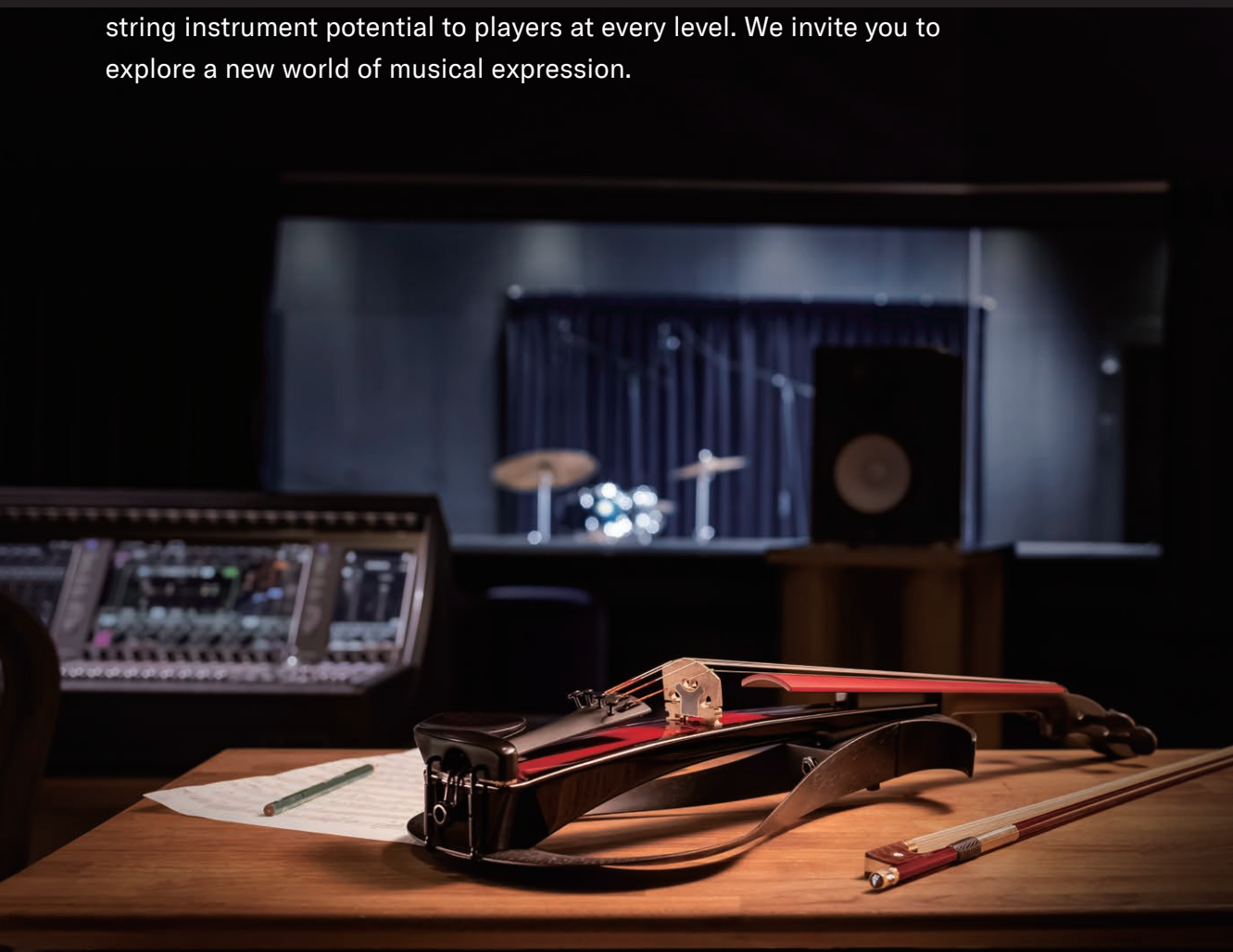
YAMAHA STRINGS

ELECTRIC VIOLIN SILENT™ SERIES



NEW DIMENSIONS OF STRING EXPRESSION

Yamaha Electric and Silent string instruments are designed to provide enhanced practice and performance enjoyment. Our resolute quest for musical satisfaction has led to the creation of two revolutionary instruments: the Yamaha Electric Violin gives performers unprecedented on-stage freedom and captivates audiences with radical visual design, while the SILENT™ Series embodies an ideal blend of sound and playability that can put more joy into both practice and performance. Behind the startling visual designs of these instruments are details aimed at fulfilling the essential requirements of any high-quality musical instrument: outstanding playability and comfort as well as superior sound. Yamaha's unflagging pursuit of perfection brings groundbreaking string instrument potential to players at every level. We invite you to explore a new world of musical expression.





INDEX

- 4 Electric Violin
- 8 SILENT Violin™
- 11 SILENT Viola™
- 14 SILENT Cello™
- 18 SILENT Bass™
- 20 Carbon Bows
- 21 Accessories
- 22 Specifications

ELECTRIC VIOLIN

A NEW SOUND IS HERE

Achieves playability as close to an acoustic violin as possible and richer resonance. Furthermore, it has been upgraded with stage-oriented color variations and a luxurious appearance. This model captivates as it maximizes the expressiveness that performers have developed playing acoustic violins.

YEV104PRO [4-String model]

Colors : Deep Red (DR),
Natural and Brown (NBR), Natural and Black (NBL)

YEV105PRO [5-String model]

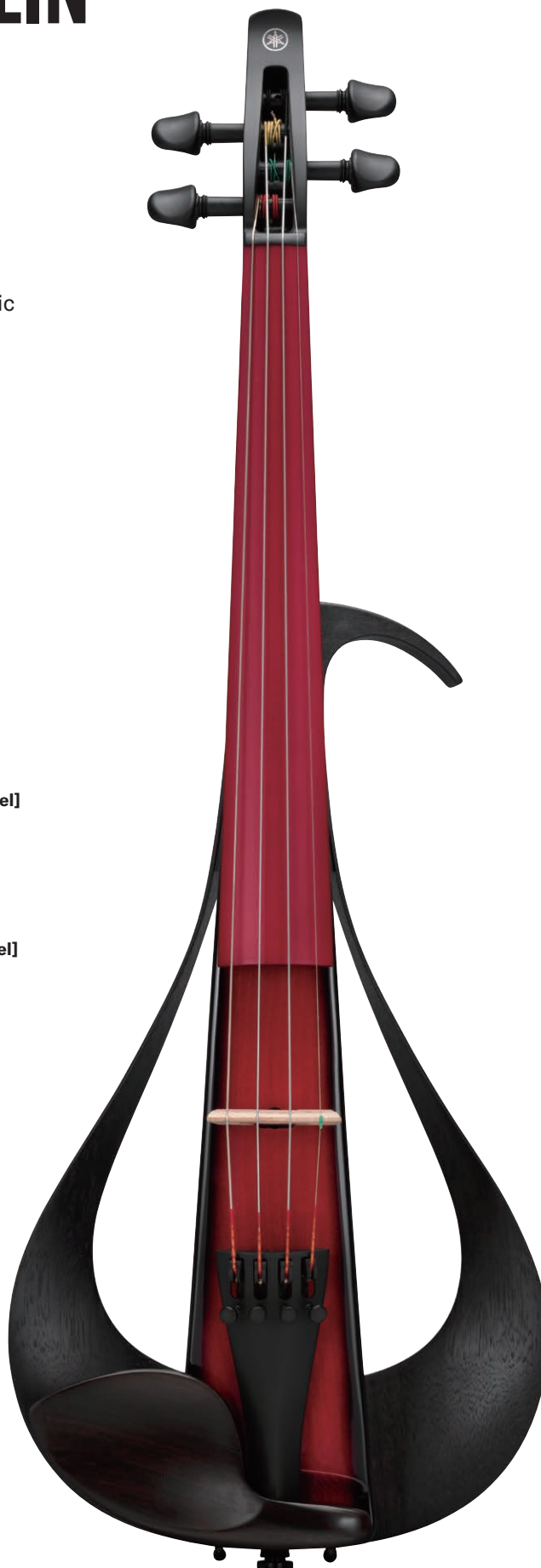
Colors : Deep Red (DR),
Natural and Brown (NBR), Natural and Black (NBL)



YEV104PRONBR



YEV104PRONBL



YEV104PRODR



YEV105PRODR



YEV105PRONBR



YEV105PRONBL

Appearance worthy of the high-end model

Based on the YEV104/105 design, upgraded to specifications and appearance appropriate for high-end models. The fingerboard is also colored to look good on stage.

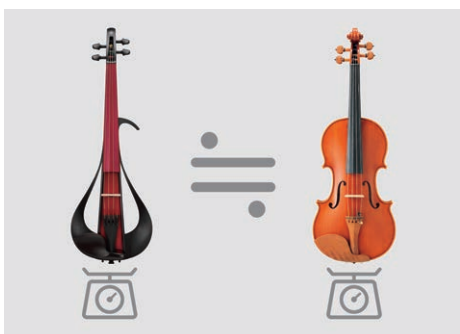


Body Structure closer to acoustic violin

Similar to an acoustic violin, the body is made of spruce on the top board and maple on the back board. It also has slits on the side and a hollow inside like an acoustic violin. This structure delivers a richer, more acoustic sound as well as a quicker response.

Pegs with excellent playability

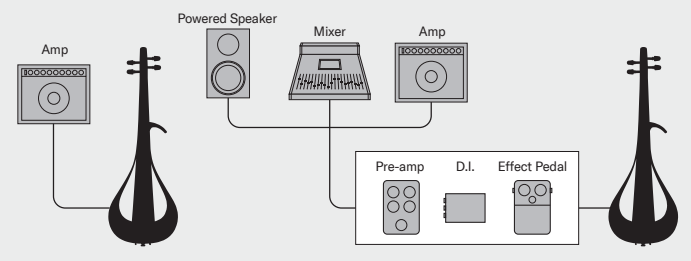
The YEV104PRO/YEV105PRO features highly acclaimed Wittner Finetune-Pegs, which are also in high demand for stage use. The internal gears allow precise and quick tuning even on stage.



Lighter weight

The model YEV104PRO weighs about 510 grams, which is the same as an acoustic violin. This is about 50 grams lighter than the YEV104, which makes players feel as if they are playing an acoustic violin.

System Diagram: External Connections



* The input impedance of the first device (preamp, direct box, etc.) the instrument connects to has a major influence on the sound quality produced by the speakers. In order to obtain the maximum performance from the instrument, we recommend connecting to a device with an input impedance of more than 1MΩ.

ELECTRIC VIOLIN



reddot award 2017
winner



STRIKING PRESENCE FOR LIVE PERFORMANCE

The innovative electric violin features an elegant, eye-catching design that can add strong visual impact to any performance. Of course that visual appeal is backed up by solid playability and sound that give the player unprecedented expressive freedom.

YEV104 [4-String model]

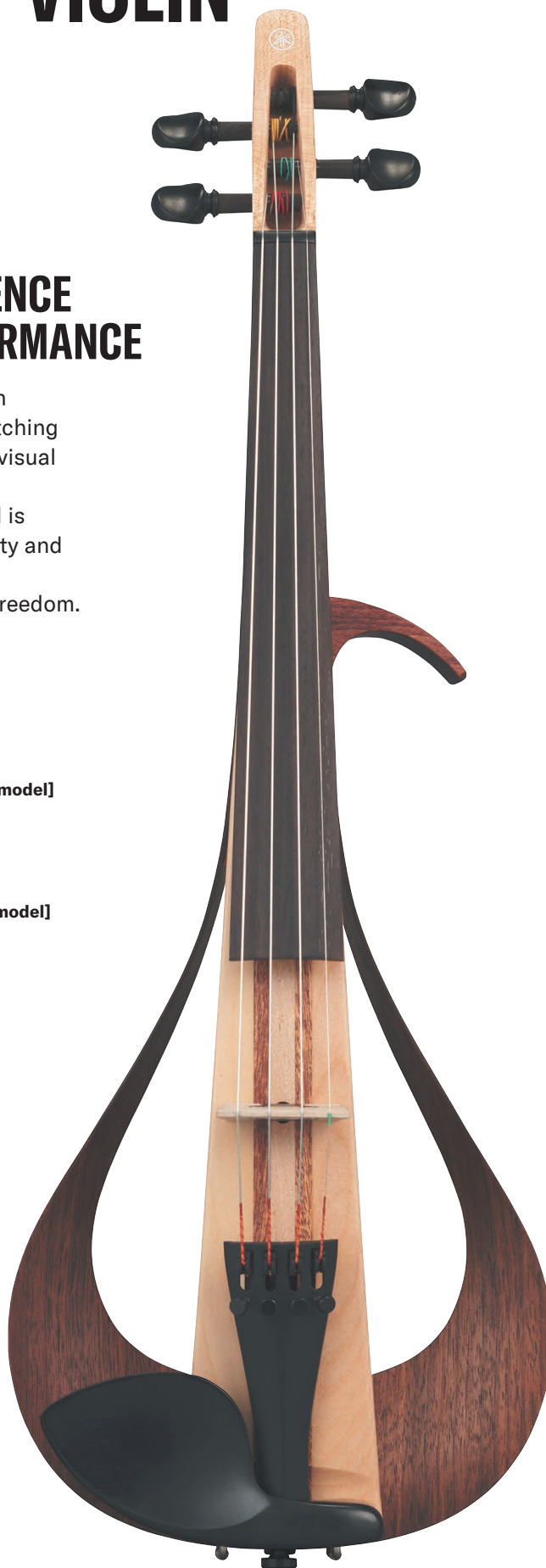
Colors : Natural (NT), Black (BL)

YEV105 [5-String model]

Colors : Natural (NT), Black (BL)



YEV104BL



YEV104NT



YEV105NT



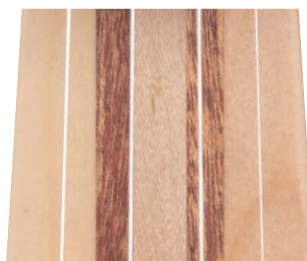
YEV105BL

A design that radiates impressive presence on stage merges easy playability with visual beauty that will reach the entire audience. Both player and listener experience a new dimension of violin performance.

5-piece Body Optimizes Resonance

Carefully selected maple with mahogany and spruce in a 5-layer construction results in excellent response and natural overall sound.

* The black (BL) model has the same construction, but the layers cannot be seen.

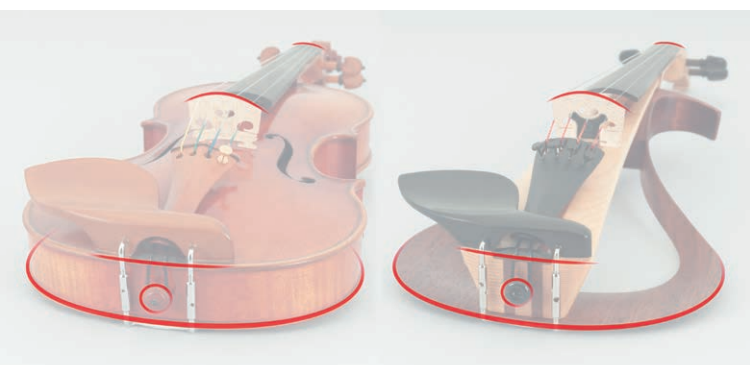


Bowing Nuances Faithfully Reproduced

The same type of high-output passive bridge pickup that is a highly regarded feature of the SV250 is used. While effectively picking up the sound of the entire instrument, it also captures the instrument's response and expressive bowing nuances employed by the player.

Walnut Frame Enhances Natural Tone

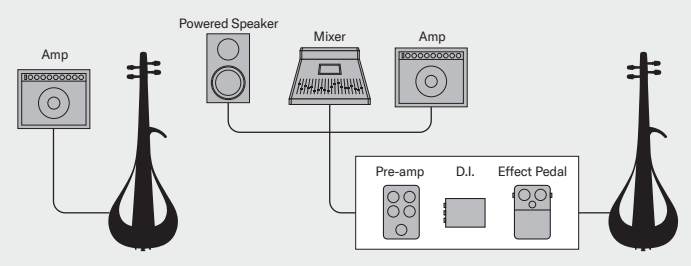
A 5-layer oil-finished walnut frame offers an ideal blend of flexibility and strength in a design that is not only striking, but also contributes to natural musical resonance.



An Easy Switch from Acoustic Violin

The natural touch points and curves allow the player to effortlessly move between the YEY and a standard acoustic violin. The instrument's shape allows for most standard off-the-shelf Bridge-type shoulder rests, chin rests and tailpieces.

System Diagram: External Connections



* The input impedance of the first device (preamp, direct box, etc.) the instrument connects to has a major influence on the sound quality produced by the speakers. In order to obtain the maximum performance from the instrument, we recommend connecting to a device with an input impedance of more than 1MΩ.

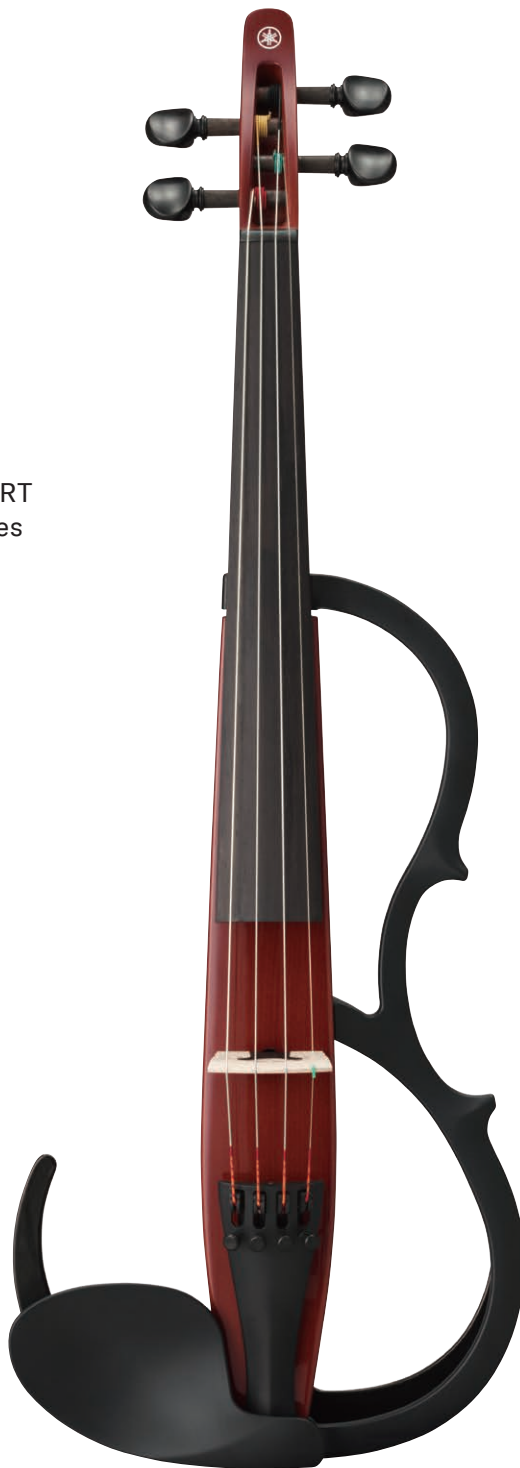
SILENT *Violin*TM

REALISTIC TONE AND RESONANCE FOR PRACTICE

Even without a resonant body, the SRT Powered System faithfully reproduces the body resonance, sound and ambience of an acoustic violin. The YSV104 is an excellent choice for all players who want to practice quietly with acoustic violin tone.

YSV104

Colors : Brown (BR), Black (BL), Red (RD)



BR



RD



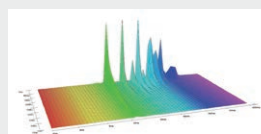
BL



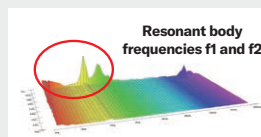
SRT Powered System

The SRT (Studio Response Technology) Powered System is a digital technology that, based on an analysis of the sound of acoustic instruments, adds natural tone and resonance in real time to the sound of instruments that do not have a large sound box such as the SILENT ViolinTM.

The system reproduces the player's unique expression by adding resonance to the analog signal from the instrument's pickups, rather than relying on any sampled sounds.

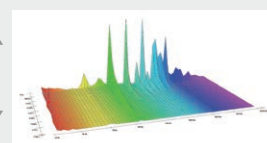


Characteristics of an instrument with no sound box



Resonant sound of an acoustic instrument

Combined



Characteristics of an acoustic instrument resonance added by SRT

*Image is for illustrative purposes and does not represent actual frequency characteristics.

Every detail of the instrument is dedicated to realistic violin resonance that can lead the player to new heights of musical accomplishment.

Simulated Acoustic Violin Body Resonance

Although the YSV104 is a solid-body instrument that does not resonate like an acoustic violin, the SRT Powered System faithfully reproduces the rich presence and tonal variety that are appealing characteristics of acoustic violin sound. Left and right channel volume, frequency response, and delay have been carefully optimized so that the performer can play while hearing realistic acoustic tone and resonance via the earphones.

* SRT: Studio Response Technology



Acoustic Form Makes Switching Instruments Easy

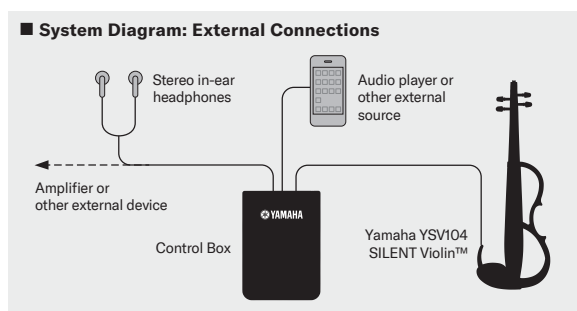
The layout of the bridge, tailpiece, neck, and other parts is the same as an acoustic violin, and the ability to use standard off-the-shelf Bridge-type shoulder rests facilitates a smooth, stress-free transition from acoustic violin to the SILENT Violin™ and back. Proper bow angle and finger placement give beginners a solid foundation to grow from.

Streamlined Control Box Supports Practice

Two reverb modes provide ambience optimized for practice and playing enjoyment. "ROOM" provides realistic room ambience that is ideally suited to practice, while "HALL" simulates the deep, rich reverb of a concert hall for pure playing enjoyment. An external audio source can be connected to the control box for play-along practice.



* The control box is for use with the YSV104 only. It cannot be used with other SILENT Violin™ models.



SILENT *Violin*TM

TONE AND PLAYABILITY FOR ANY GENRE AND STAGE

This refined performance model goes beyond practice and can hold its own on any stage. An original body structure contributes to sophisticated tone that is perfect for a wide range of musical genres.

SV250 [4-String model]

Color : Brown (BR)

SV255 [5-String model]

Color : Brown (BR)

Dedicated Control Box Expands Tonal Versatility

The dedicated control box puts control of volume and tone within easy reach. In addition to a line out jack that's suitable for sending the SILENT ViolinTM signal to an amplifier or effect unit, a XLR connector is provided for direct, high-quality connection to professional sound reinforcement and recording equipment.



* The control box is for use with the SV250 or SV255 only. It cannot be used with other SILENT ViolinTM models.



SV250

Original Body Structure for Beautiful Tone

A hollow chamber between the top and body, side slits, and other design details contribute to natural acoustic violin resonance while minimizing unamplified volume.

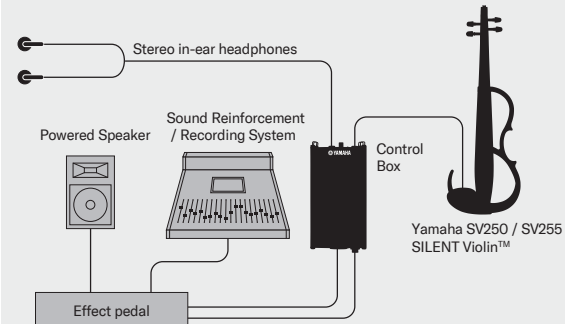


Two Pickup Types Complement Musical Expression

A pickup below the bridge picks up the overall resonance of the instrument's body for faithful reproduction of the subtlest playing techniques, while a second pickup built into the bridge accurately senses string vibration and bowing nuances. Balance between the two pickups can be adjusted as required.



■ System Diagram: External Connections

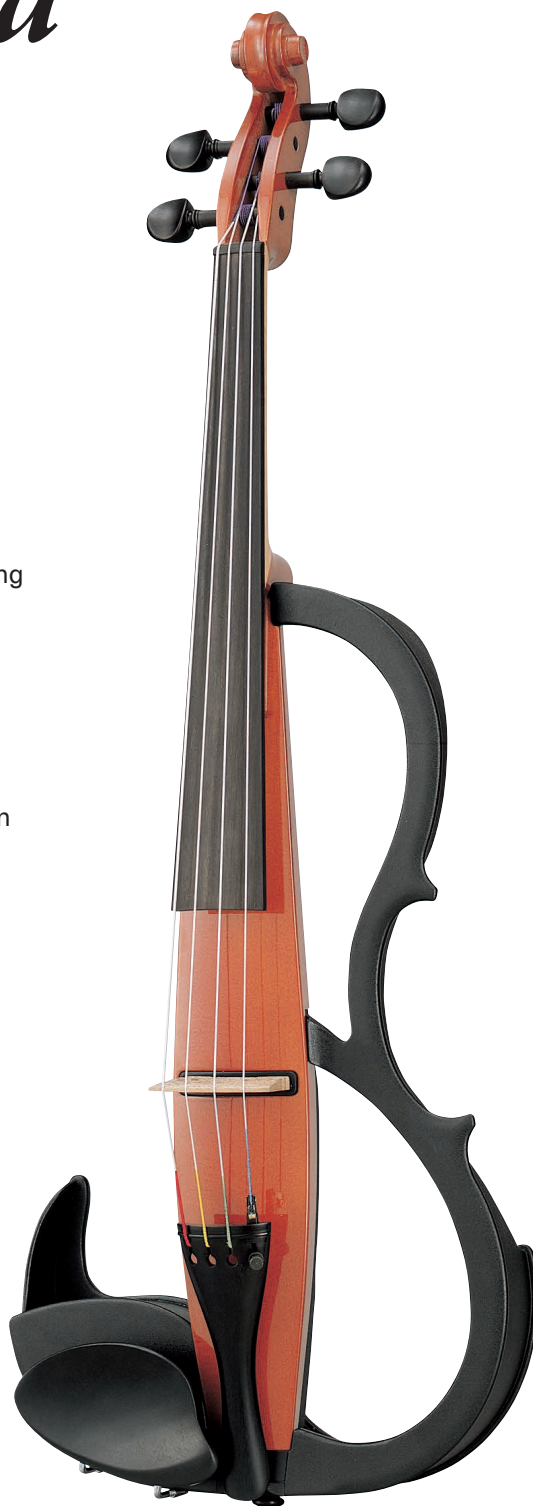


* Equipment printed in grey is optional

SILENT *Viola*™

A SILENT VIOLA™ FOR PRACTICE AND PERFORMANCE

A dual-sensor stereo pickup system provides delicate reproduction of playing nuances from pianissimo to fortissimo. The SVV200 embodies fine acoustic viola playability in a quiet instrument that can be played anywhere. Critical sound and playability components are identical to their acoustic viola counterparts. The utmost care has been taken in every detail.



SVV200

Color : Brown (BR)

Built-in Controls Enhance Tone

In addition to a real wood frame that contributes to richly musical resonance, a built-in tone control system makes it possible to shape the upper harmonics for optimum tone and projection in just about any environment and performance situation.

Familiar Feel for Easy Instrument Changes

Tailpiece, chin rest, bridge, neck, and fingerboard are all the same as those on acoustic instruments, crafted from the same materials. Standard off-the-shelf Bridge-type shoulder rests can be used too, making it easy to switch between the SILENT Viola™ and a traditional acoustic instrument.



Performance-oriented Outputs

Line and headphone outputs designed with performance in mind are provided in convenient locations on the back of the instrument, where connectors and cables won't interfere with the performance. The built-in tone control system can be completely bypassed in situations where tonal adjustments will be made at a mixing console, for example.



Equalizer mode switch

Tone control system

SILENT Cellos are designed to achieve both quietness and the rich sound and feel of an acoustic cello. These instruments dramatically expand the freedom of sound creation, transcending the boundaries of “practice instruments” to inspire new emotions through the cellist’s musical expression.

SILENT Basses offer a sound quality and playing feel as close as possible to an acoustic bass. This series delivers a realistic body resonance, meeting the expectations of many musicians.





SILENT *Cello*™

FREEDOM TO CREATE YOUR SOUND

SVC300C features a well-balanced tone that fits various musical styles and it's easy to carry. This cello offers expressive performance that excels in any situation, from home recording to the stage.

SVC300F is the high-end silent cello that closely replicates the feel and sound of an acoustic instrument while retaining the quietness of a SILENT Cello™.



SVC300C

Color : Brown (BR)

Original Soft Case for SVC300C



SVC300F

Color : Brown (BR)

Original Soft Case for SVC300F





We have made each cello's individual wood texture a prominent part of its design. The unique character of natural wood is highlighted by the thin coating on the frame, body, and neck, which brings out the sharp detail of the wood grain.



The internal cavity structure, inherited from previous models, brings out acoustic resonance even in instruments with no sound box. Feel the true cello tone, a rich, vibrant sound ideal for the stage.



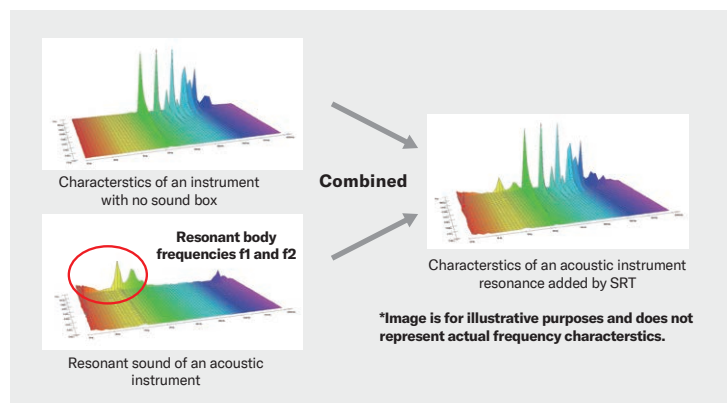
Combination of the different sound types, blend control, equalizer (treble and bass) and reverbs allow for a high degree of freedom in sound creation.



SRT Powered System

The SRT (Studio Response Technology) Powered System is a digital technology that, based on an analysis of the sound of acoustic instruments, adds natural tone and resonance in real time to the sound of instruments that do not have a large sound box, like our SILENT Cello™.

The system reproduces the player's unique expression by adding resonance to the analog signal from the instrument's pickups, rather than relying on any sampled sounds.



SILENT *Cello*™

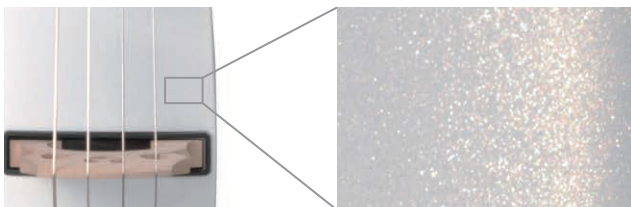
SVC300C PW

Color : Pearl White (PW)



SVC300F PW

Color : Pearl White (PW)



Pearl White color highlights the player's individuality and allows for a more stage-focused performance

STREAMLINED DESIGN WITH ALL THE ESSENTIALS

This go-anywhere, play-anywhere design is about as small and lightweight as it can be while still offering essential functionality for great sound and playability.



SVC50

Color : Black (BL)



Standard Soft Case for SVC50

Easy Transportation and Storage

The SVC50 feature compact designs that facilitate transportation and storage. Knee rests can be retracted or removed completely and compactly stored in the instrument's soft case for stress-free transportation to any location.



Removable chest pad
and knee rests



The SVC50's leg supports
can be easily removed
from the instrument body.

SILENT *Bass*TM

THE ULTIMATE SILENT BASSTM

Building on the high level of quality achieved in the SLB300, this model offers tone that is remarkably close to acoustic bass plus even further refined playability. With appearance, specifications, and performance that befit the high-end jazz scene, the SLB300PRO goes beyond the standard definition of electric upright bass with unlimited musical potential.

SLB300PRO

Color : Brown (BR)

Bridge

In addition to featuring A.R.E treatment*, the thickness of the maple bridge has been carefully optimized for this instrument.

Aluminum adjusters specially selected for the SLB300PRO also provide a notable upgrade that contributes to improved response and clear tone.

* A.R.E stands for Acoustic Resonance Enhancement, an innovative process that matures the wood in a short period of time to achieve tone and resonance that would normally only be found in an older instrument that has been played for many years.



Tuning machine

The tuning machine head handles are machined out of heavy duty stock and feature an original shape for smooth, easy operation. Overall durability and operability have been significantly improved.



A refined exterior for high-end jazz scene



- The neck is made of beautiful tiger-stripe curly maple with an extremely thin finish that feels like a well-played instrument.
 - The body features an antique-like finish that simulates the color and tactile wood grain of a vintage acoustic bass.
 - Special-order gold-plated machine heads and a simulated tortoise shell control panel provide elegant accents to refined overall appearance.
- * The wood grain will be different in each individual instrument.

Dedicated SLB300PRO tailwire

Tail wire that previously consisted of 49 x 0.22-millimeter strands has been upgraded to a more flexible wire consisting of 343 x 0.06-millimeter strands. A flexible tail wire developed specially for the SLB300PRO contributes to soft body resonance and response that are similar to those of acoustic instruments.

Previous SLB series wire



SLB300PRO wire



Upgraded fingerboard and neck materials

With an ebony fingerboard, which is a rare feature on an upright bass, and a beautiful curly maple neck, this instrument offers outstanding response as well as natural tone playability.



REFINED BASS FOR ANY STAGE

Developed in collaboration with leading jazz players from around the world, the SLB300 takes SILENT Bass™ sound and playability to unprecedented levels, while Yamaha's SRT Powered System adds flexible, first-class sonic control. An antique style finish enhances the beauty and real-wood feel of the body, adding refined visual appeal to sound quality that is suitable for even the most distinguished venues.

SLB300

Color : Brown (BR)



Standard Soft Case for SLB300PRO/SLB300
Stored in the dedicated soft case, total volume is only about 25% of a standard contrabass.



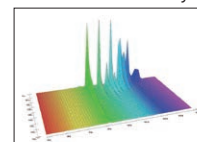
Body Designed for Pure Acoustic Tone (SLB300PRO/SLB300)

A hollow chamber and side slits help to reproduce natural acoustic resonance while minimizing unamplified volume.

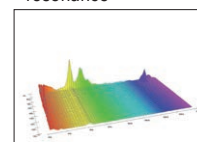


SRT Powered System adds realistic body resonance. (SLB300PRO/SLB300)

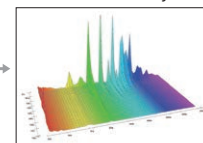
Response of an instrument
with no resonant body



Acoustic instrument
resonance



Response with acoustic
instrument body
resonance added by SRT



The Yamaha SRT (Studio Response Technology) Powered System is a digital technology that employs in-depth analysis of the acoustic properties of actual musical instruments to add natural-sounding body resonance in real time to instruments such as the SILENT Bass™ that do not have a physical resonant body.

* This system adds simulated body resonance to the analog signal output from the instrument's pickup so that the performer's own playing technique and nuances are delivered without compromise. No sampling or sample playback is involved.

* These graphs are provided to illustrate the effect of the SRT Powered System, and do not represent the system's actual frequency response.

Body Designed for Pure Acoustic Tone

A hollow chamber and side slits help to reproduce natural acoustic resonance while minimizing unamplified volume.

Three Microphone Types, EQ, and Blend Control Deliver Ideal Sound (SLB300PRO/SLB300)

Acoustic body resonance as picked up by three well-known and prized studio microphones is realistically simulated. (*SRT Powered System) The microphones can be selected via the MIC TYPE selector, and the sound adjusted via the BLEND and BASS/TREBLE controls to ideally match a wide range of musical genres, ensembles, performance locations, and more.



Traditional Acoustic Bass Form Where It Matters

A compact, simplified shape does away with nonessential mass and volume. An acoustic bass shaped frame and a center of gravity designed to minimize rotation further enhance playability, while the bridge, fingerboard, neck and other critical parts are in positions that require no change in hold or playing technique from traditional acoustic basses. SLB300PRO/SLB300 also uses standard contrabass strings, so the user can choose the strings that he or she prefers.



CARBON BOWS

VIOLIN BOWS



YBN100 Series

Yamaha crafts five carbon bows that offer wood-like appearance plus a selection of weights and balance to satisfy individual player performances.

		Overall Weight		
		59.0g (Light)	60.5g (Medium)	62.0g (Heavy)
Closer to frog ↑ Balance ↓ Closer to tip	230mm		YBN100-M1	
	245mm	YBN100-L2	YBN100-M2	YBN100-H2
	260mm		YBN100-M3	

* Weight and balance values listed above may have an error of +0.3g / -0.3g, +5mm / -5mm.



CBB101

This model offers outstanding playing feel with appealing economy. Flex is identical to a wood bow, and control is easy for beginners as well as advanced players. The CBB101 is an excellent second-bow choice for professionals too.



CBB107ZB Artist Signature Series

One of the world's most respected and preeminent violin professors and soloists, Zakhar Bron is the mentor of such great violinists as Vadim Repin, Maxim Vengerov, Daishin Kashimoto, and Tamaki Kawakubo. Bron is very particular when it comes to bow performance and his collaboration with Yamaha manufacturing expertise has resulted in the Zakhar Bron signature bow.



Zakhar Bron

VIOLA BOW



The benefits of this bow are in its ample resilience and controllability. In addition to being a practical, economical choice for beginning to advanced players, the CBB202 features abalone ornamentation for elegant visual appeal.

CBB202



CELLO BOW



Combining fine playing characteristics and economy, this cello bow offers the power that players need for dynamic performance. The CBB301 is great for beginners and professionals alike.

CBB301



BOWS SPECIFICATIONS

Model		Stick		Grip		Winding	Button		Frog	
		Material	Color	Material	Color		Metal Band	Core	Material	Eye
Violin Bows	YBN100 Series	CFRP ※1, GFRP ※2	Wood	Goat Leather	Black	Gold-filled Brass	Nickel Brass	Snakewood / Abalone Inlay	Snakewood	Abalone / Nickel Brass Ring
	CBB101	CFRP ※1, GFRP ※2	Black	Goat Leather	Black	Silver Plate	Nickel	Ebony	Ebony	Pearl / Nickel Ring
	CBB107ZB	CFRP ※1, GFRP ※2	Black	Goat Leather	Black	Gold Brass / Décor	Gold Brass	Ebony / Abalone Inlay	Ebony	Abalone / Gold Ring
Viola Bow	CBB202	CFRP ※1, GFRP ※2	Black	Goat Leather	Black	Silver Plate / Décor	Nickel	Ebony	Ebony	Pearl / Nickel Ring
Cello Bow	CBB301	CFRP ※1, GFRP ※2	Black	Goat Leather	Black	Silver Plate / Décor	Nickel	Ebony	Ebony	Pearl / Nickel Ring

※1 CFRP:Carbon Fiber Reinforced Plastic ※2 GFRP:Glass Fiber Reinforced Plastic

* Specifications and design subject to change without notice.

ACCESSORIES

- **Your sound, wherever you are.**
THR5A



THR5A packs in everything you need for an off-stage amp. Real tube amp tone and dynamics, great sound at low volume, genuine hi-fi quality stereo playback and full recording capabilities. Get ready to spend a lot more time playing the violin.

- **Wireless freedom. Cable simplicity.**
Relay G10



The Line 6 Relay® G10 is incredibly easy to use—it works just like a cable. You get incredible sound quality, rock-solid performance, and the freedom of digital wireless—all from the world's easiest, most compact instrument wireless system.

For SILENT Cello™ and SILENT Bass™

- **Stand BST1**
(Compatible for SVC300C, SVC300F, SLB300PRO, SLB300)

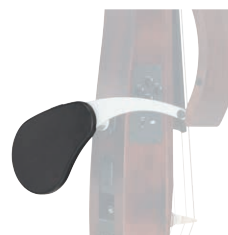


For SILENT Bass™

- **Extension Frame**
BEF2
(Compatible for SLB300PRO, SLB300)



- **BKS2**
(Compatible for SLB300PRO, SLB300)



AC POWER ADAPTER

- **PA-130B or an equivalent recommended by Yamaha**
(Compatible for SV250, SV255, SVC300C, SVC300F, SVC50)



SPECIFICATIONS

	Electric Violin™				SILENT Violin™			SILENT Viola™
	YEV104PRO	YEV105PRO	YEV104	YEV105	YSV104	SV250	SV255	SVV200
Body Color	Deep Red (DR) Natural and Brown (NBR) Natural and Black (NBL)		Natural (NT) Black (BL)		Brown (BR) Black (BL) Red (RD)	Brown (BR)		Brown (BR)
Size	4/4		4/4		4/4	4/4		16" (406mm)
Neck	Maple		Maple		Maple	Maple		Maple
Body	Spruce top and Maple back 2 layered		Spruce/Mahogany/Maple		Spruce	Spruce/Maple		Spruce
Frame	Walnut		Walnut		Plastic	Plastic		Plywood
Finger Board	Maple		Composite		Composite	Ebony		Ebony
Tuning Pegs	Wittner Finetune-Pegs		Ebony		Ebony	Ebony		Ebony
Strings	D'addario Zyex, Helicore (C string)		D'addario Zyex, Helicore (C string)		D'Addario Zyex	D'addario Zyex, Helicore (C string)		Thomastik Dominant
Bridge	ARE treatment applied Maple with built-in Piezo-electric Pickup		Maple with built-in Piezo-electric Pickup		Maple (with built-in pickup)	Maple (Aubert)		Maple (Aubert)
Tailpiece	Synthetic Resin (equipped with fine tuners)		Synthetic Resin (Yamaha original)		Synthetic Resin (Yamaha original)	Wittner Ultra		Ebony
Fine Tuner	4 (each string)	5 (each string)	4 (each string)	5 (each string)	4 (each string)	4 (each string)	5 (each string)	1 (A-string)
Chin Rest	Ebony		Composite		Plastic	Plastic		Ebony
Pickup	Maple with built-in Piezo-electric Pickup		Maple with built-in Piezo-electric Pickup		Piezo Pickup (Bridge)	2 Piezo Pickups (body and bridge)		2 Piezo Pickups
Electric Controls	Volume control, Selector Switch (Volume Control activation switch)		Volume control, Selector Switch (Volume Control activation switch)		Volume	Pick up Blend		Volume, EQ Mode Switch, EQ Control
Control Box	———		———		Volume, Sound type switch (Room/Hall)	Line Out Volume, Treble, Bass, Headphone Volume, Grand Lift Switch, Valanced Out, PAD Switch		———
In/Out Jacks	Passive output		Passive output		Instrument jack (Input/Output), AUX IN jack (Input), PHONES jack (Output) *all mini jack type	Phones Out, Line Out, Balanced Out		Phones Out, Line Out
Power Supply	———		———		AA size 1.5V battery 2pcs (optional)	AA size 1.5V battery 2pcs. or AC adapter (optional)		9V battery 1pc.
Standby Power Consumption	———		———		———	———		———
Battery Life*	Manganese	———	———		———	approx. 15~45 hrs		approx. 12 hrs
	Nickel metal hydride	———	———		maximum 24 hrs	———		———
	Alkaline	———	———		maximum 29 hrs	approx. 50~120 hrs.		approx. 24 hrs
Dimensions (L×W×H)	592×204×111mm	607×204×120mm	592×204×111mm	607×204×120mm	(instrument) 583×206×111mm (control box) 98×70×20mm	(instrument) 591×206×117mm (control box) 147×72×49mm	(instrument) 600×206×122mm (control box) 147×72×49mm	677×246×129mm
Weight	approx. 510g	approx. 550g	approx. 560g	approx. 590g	490g (control box) 70g	500g (control box) 260g	540g (control box) 260g	740g
Control Box	—	—	—	—	○	○	○	—
Earphone	—	—	—	—	○	○	○	○
Soft Case	—	—	—	—	—	—	—	—
Bow	—	—	—	—	—	—	—	—
Shoulder Pad	—	—	—	—	—	—	—	—
Standard Accessories	———		———		Connection Cable ×2	Connection Cable, Cable bands		—

	SILENT Cello™			SILENT Bass™	
	SVC300C/SVC300C PW	SVC300F/SVC300F PW	SVC50	SLB300PRO	SLB300
Body Color	Brown (BR), Pearl White (PW)	Brown (BR), Pearl White (PW)	Black (BL)	Brown (BR)	Brown (BR)
Size	4/4	4/4	4/4	String Length 1,040mm (41")	String Length 1,040mm (41")
Neck	Maple	Maple	Maple	Curly Maple	Maple
Body	Spruce/Maple	Spruce/Maple	Alder	Spruce/Mahogany	Spruce/Mahogany
Frame	————	Molded Plywood	————	Beech (Detachable)	Beech (Detachable)
Knee Supports	Beech (Folding Type)	————	Beech (Detachable)	(optional : BKS2)	(optional : BKS2)
Finger Board	Ebony	Ebony	Ebony	Ebony	Rosewood
Tuning Pegs	Worm Gear Type	Worm Gear Type	Worm Gear Type	Custom Worm Gear Type (Thick Type)	Custom Worm Gear Type
Strings	D'addario Hericore, Ball-end-type	D'addario Hericore, Ball-end-type	Prelude (D'addario)	Helicore Hybrid Light (D'addario)	Helicore Hybrid Light (D'addario)
Bridge	Maple(Aubert)	Maple(Aubert)	Maple (PANPI)	Maple with A.R.E (Height Adjustable)	Maple (Height Adjustable)
Tailpiece	Wittner Ultra	Wittner Ultra	Ebony	Ebony (Reverse type)	Ebony (Reverse type)
Fine Tuner	4 (Each String)	4 (Each String)	————	————	————
Pickup	Piezo Pickup	Piezo Pickup	Piezo Pickup	Piezo Pickup	Piezo Pickup
Electric Controls	Power(ON/Standby), Volume, Phones, Sound/Tuner, Blend, Reverb(Room/Hall), Treble, Bass	Power(ON/Standby), Volume, Phones, Sound/Tuner, Blend, Reverb(Room/Hall), Treble, Bass	Volume, Aux-In Volume, Reverb Switch (RM/HL1/HL2)	• Volume control knob • Treble control knob • Bass control knob/Bypass button • Blend control knob/ Microphone type switch button	• Volume control knob • Treble control knob • Bass control knob / Bypass button • Blend control knob / Microphone type switch button
In/Out Jacks	Line out(6.3mm mono standard), Phones(3.5mm stereo mini), Aux-In(3.5mm stereo mini)	Line out(6.3mm mono standard), Phones(3.5mm stereo mini), Aux-In(3.5mm stereo mini)	Phones Out, Line Out, Aux-In	Line Out	Line Out
Power Supply	AA Alkaline (LR6) or NiMH battery x2, Power Adaptor (sold separately): Yamaha PA-3C or an equivalent recommended by Yamaha (for use in Japan), PA-130 or an equivalent recommended by Yamaha (for use in the other countries), Output: DC12V/0.7A, Output Polarity: Center Plus	AA Alkaline (LR6) or NiMH battery x2, Power Adaptor (sold separately): Yamaha PA-3C or an equivalent recommended by Yamaha (for use in Japan), PA-130 or an equivalent recommended by Yamaha (for use in the other countries), Output: DC12V/0.7A, Output Polarity: Center Plus	AA size 1.5V battery 2pcs. or AC adapter (optional)	AA battery (alkali or nickel hydrogen) 2pcs.	AA battery (alkali or nickel hydrogen) 2pcs.
Standby Power Consumption	0.1 W	0.1 W	————	————	————
Battery Life*	Manganese	————	approx. 2.5~15 hrs.	Alkali battery: Approx. 32 hours	Alkali battery: Approx. 32 hours
	Nickel metal hydride	approx. 9.5 hrs	————		
	Alkaline	approx. 7.5 hrs	approx. 10~35 hrs.		
Dimensions (L×W×H)	1,251 × 438 × 243 mm (without chest support)	1,266 × 430 × 243 mm (without chest support)	1,235 × 432 × 240mm (with the knee support attached, and the end pin fully retracted)	1,692 × 456 × 330mm (with the frame attached and the end pin fully contracted)	1,692 × 456 × 330mm (with the frame attached and the end pin fully contracted)
Weight	3.6kg	3.4kg	3.5kg	7.0kg	6.8kg
Stereo Audio Adapter (stereo mini plug to stereo phone plug)	—	—	○	—	—
Soft Case	○	○	○	○	○
Bow	—	—	—	—	—
Chest Support	○	○	○	—	—
Standard Accessories	Chest Support, Soft Case	Chest Support, Soft Case	Audio Cable	Mute, Allen Wrench	Mute, Allen Wrench

* The battery life will vary depending on the quality of the batteries, or the use of reverb, headphones, etc. * All specifications subject to change without notice.

