

CROSSTOWN

Advanced Lightweight Hardware

HW3

HW3 Crosstown Advanced Lightweight Hardware Delivers a Compact and Durable Solution for the Gigging Drummer

Strong, light, compact, stable, and natural Cymbal/Snare sound

HW3

- Hardware
 - Cymbal Stands CS3 x 2
 - Hi-Hat Stands HHS3
 - Snare Stands SS3
- Included Accessories
 - Hardware bag with 4 individual inner bags



HHS3
Advanced Lightweight Hi-Hat Stand



CS3
Advanced Lightweight Cymbal Stand



SS3
Advanced Lightweight Snare Stand

Specifications

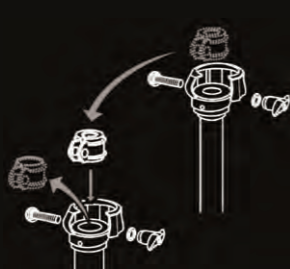
Model	Advanced Lightweight Hardware Set	Cymbal Stand	Hi-Hat Stand	Snare Stand
	HW3	CS3	HHS3	SS3
	CS3 x 2, SS3, HHS3, Hardware bag			
Weight	7.8 kg (17.2 lbs) * include Hardware bag	1.5 kg (3.3 lbs)	2.2 kg (4.8 lbs)	1.5 kg (3.3 lbs)
Available Height Range	-	61 - 133 cm (24" - 52.3")	62 - 90 cm (24.4" - 35.3")	42 - 58 cm (16.3" - 22.8")
Accessories	Hardware bag, Inner bag x 4	Inner bag	Inner bag	Inner bag



Durable Aluminum channel legs
Non-slip rubber foot



Channel-track aluminum bracing



3-tier to 2-tier convertible for more compact and higher (CS3)



Increased natural and open sound from cymbals and snare drums



Inner bag included for protection

HEXRACK II

Turning Your Imagination Into Form



Innovatively Designed Aluminum Pipe... Stronger, Lighter in Weight

The HEXRACK II utilizes a complex cross section design evolved from the original HEXRACK. The pipes are made from an aluminum alloy. This combination of design and material produces pipes that are significantly lighter in weight while providing greatly improved strength—as much as double that of conventional round pipe.



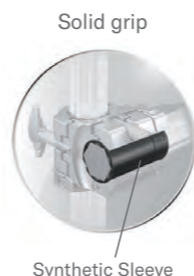
Basic 2-leg set HXR2L II

Expand With Accessories or What You Already Have

If you want to expand your HEXRACK II system, Yamaha offers a wide selection of individual add on parts that let you customize your system exactly the way you want to. The HEXRACK II is also compatible with 22.2-diameter hardware as well as the original HEXRACK system parts so you can add on to your new system with anything you might already have.

Get A Grip

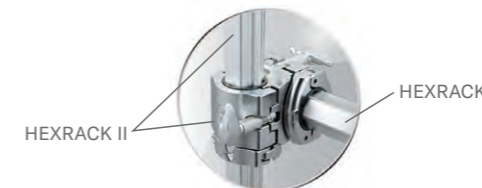
HEXRACK II clamps get a rock solid grip on the rails with a synthetic sleeve that fits between the clamp and the rail. As the clamp tightens, it compresses the sleeve to establish a solid grip. This gives the clamp a secure, slip-free hold on the rail when tightened, and allows easy adjustment when loosened, making the whole setup process quick, easy, flexible, and solid.



Solid grip

Synthetic Sleeve

Compatibility



HEXRACK II

HEXRACK



Expansion set HXREX II



HXAC II



HXDB II

DRUM RACK ACCESSORY

CLAMPS	HEX PIPES	ATTACHMENTS
HXOC II	HXCP44 II	HXLC II
HXAC II	HXCP36 II	
HXDB II	HXCP24 II	
HXTC II	T-leg	
HXCC II	HXTL30 II	
	HXTL23 II	



HXCC II



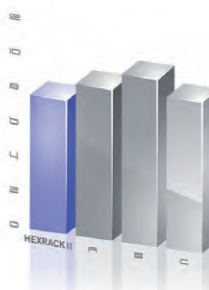
HXTC II



HXOC II

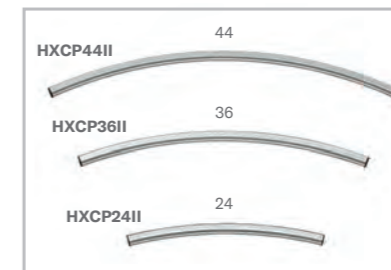


HXLC II



Great Strength Without The Weight

For as solid as the new HEXRACK II system is, it is amazingly light. Using a special aluminum alloy, the HEXRACK II design team created a six-sided, slotted rail that offers an optimum balance of light weight and strength. These rails are unmatched for rigidity and weight, and resist warping and compression.



Curved Pipe



T-leg