

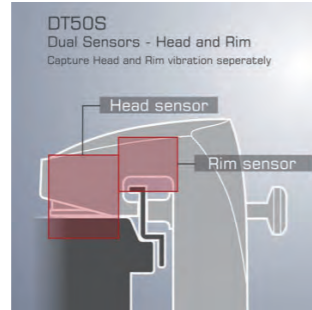
DRUM TRIGGER



Attached to your acoustic drums, the DT50 Series professional drum triggers provide accurate triggering while maintaining the natural feel and sustain of your acoustic drums. The sleek chrome finish and durable solid die-cast metal body provide a tour level quality with a professional look. The dual-trigger snare trigger facilitates complete isolation between Head & Rim for dual-zone triggering.



Chrome finish and Yamaha Absolute lug-style design provides a clean, professional look.

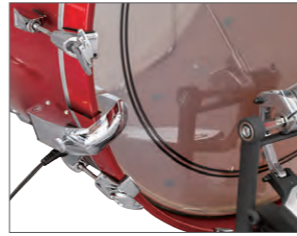


DT50S features dual trigger capability with complete isolation between head and rim triggering.

DT50S



DT50K



DTX-MULTI 12



The DTX-MULTI 12 is an electronic percussion pad equipped with 12 trigger pads and an onboard library of sounds that include drums, percussion, pitched instruments, ethnic instruments, DJ sounds, and sound effects. You can import 64MB of custom samples, expand the unit with five drum triggers or pads, or connect via USB to a computer. The DTX-MULTI 12 suits any playing style, and provides drummers at all levels with unlimited inspiration from its all-in-one design.



Multi Voices and Effects

The DTX-MULTI 12 comes loaded with a total of 1,277 voices that include an expansive collection of stunning voices and effects from our renowned MOTIF Series synthesizers plus a wealth of new percussion sounds. You can use this extensive palette of percussive tones to create custom kits that fit your playing needs.

Multi Play Modes

Stick Mode, Hand Mode, Finger Mode. The DTX-MULTI 12 lets you choose the way you want to play and best express yourself.

Multi Assignments

Up to four voices can be assigned to a single pad for simultaneous or sequential playback. You can also have voices that change according to your dynamics. This opens up a wide range of playing possibilities.

Multi Patterns

A total of 128 phrase patterns covering a wide range of musical styles are included with the DTX-MULTI 12. User memory allocations are also provided so you can record your own patterns and assign them to the pads. A sophisticated click track function even lets you control the tempo live-off-the-floor.

Multi Purpose

The DTX-MULTI 12 features make it flexible enough for Multiple applications. It's a great solution for anyone looking to:

- 1: Easily add electronics to an acoustic drum kit
- 2: Complement hand drums with a full palette of percussion sounds
- 3: Integrate electronic percussion and drums into their computer based music production system
- 4: Create a compact drum kit for portable playability

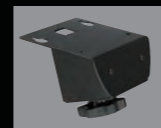


Option

Stand
PS940



Module Attachment
MAT1



PADS Snare / Tom / Cymbal / Hi-Hat / Kick

<p>XP125SD-X 2-Zone Pad Size: 12-inch TCS Snare Color: Real Wood / Black Forest</p>	<p>XP125T-X 2-Zone Pad Size: 12-inch TCS Tom Color: Real Wood / Black Forest</p>	<p>XP105T-X 2-Zone Pad Size: 10-inch TCS Tom Color: Real Wood / Black Forest</p>	<p>XP80 3-Zone Pad Size: 8-inch Snare / Tom</p>	<p>XP70 1-Zone Pad Size: 7-inch Snare / Tom</p>
<p>XP125SD-M 2-Zone Pad Size: 12-inch Mesh Snare Color: Real Wood / Black Forest</p>	<p>XP125T-M 2-Zone Pad Size: 12-inch Mesh Tom Color: Real Wood / Black Forest</p>	<p>XP105T-M 2-Zone Pad Size: 10-inch Mesh Tom Color: Real Wood / Black Forest</p>	<p>TP70S 3-Zone Pad Size: 7.5-inch Snare / Tom</p>	<p>TP70 1-Zone Pad Size: 7.5-inch Snare / Tom</p>
<p>PCY175 3-Zone Pad Size: 17-inch</p>	<p>PCY155 3-Zone Pad Size: 15-inch</p>	<p>PCY135 3-Zone Pad Size: 13-inch</p>	<p>HH65</p>	<p>HH40</p>
<p>PCY100 2-Zone & 3-Zone Pad Size: 10-inch</p>	<p>RHH135 2-Zone Pad Size: 13-inch</p>	<p>KP128 Size: 12-inch Color: Real Wood / Black Forest</p>	<p>KP100 Size: 10-inch</p>	<p>KP90 Size: 7.5-inch</p>
			<p>KU100</p>	<p>PCY95AT 1-Zone Pad Size: 10-inch Cymbal & Attachment</p>

* The products handled vary by region.

RACK SYSTEMS

<p>RS10-HXR DTX10K-X/10K-M</p>	<p>RS8 DTX8K-X/8K-M</p>	<p>RS6 DTX6K3-X/6K2-X</p>
---	------------------------------------	--------------------------------------

* The products handled vary by region.

OPTIONS

<p>Cymbal & Attachment CYAT500</p>	<p>Clamp for tom holder/ cymbal attachment with an adaptor RCL500</p> <p>Diameter : with the adapter; 16.0mm, without the adapter; 22.2mm</p>	<p>Tom Holder (w/Clamp) TPCL500</p>	<p>Replacement Head DH12-M</p> <p>Size: 12-inch, 2-ply Mesh head</p>	<p>Replacement Head DH10-M</p> <p>Size: 10-inch, 2-ply Mesh head</p>
---	--	--	---	---

* The products handled vary by region.