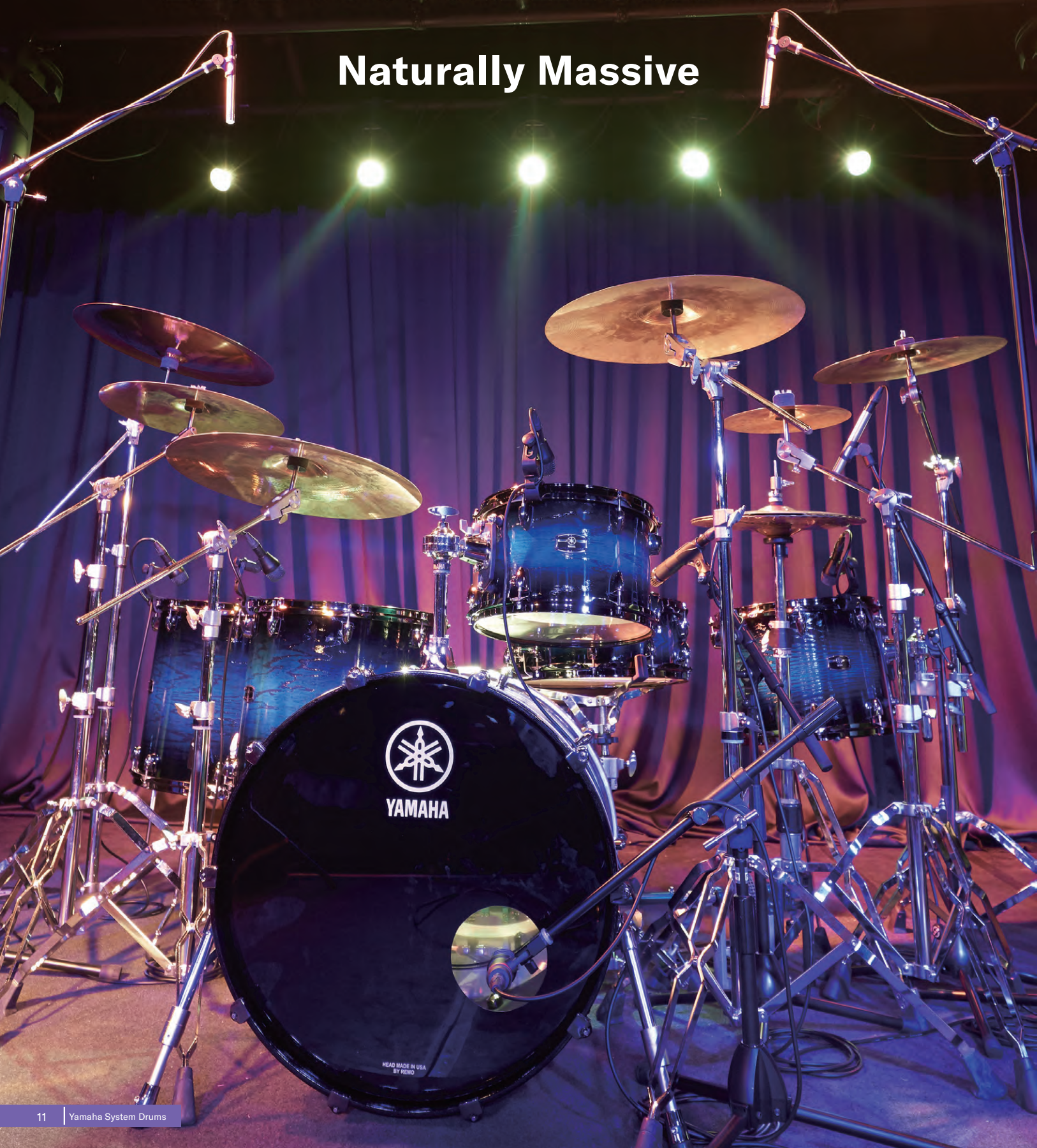


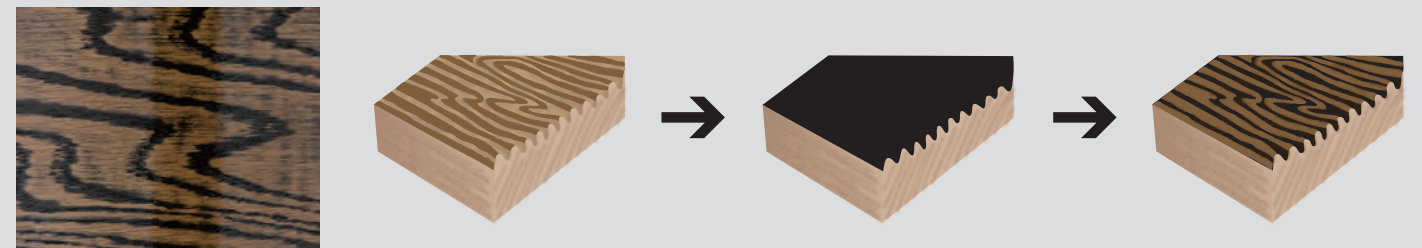
LIVE CUSTOM HYBRID OAK

Naturally Massive



UZUKURI Finish

The traditional Japanese technique known as “UZUKURI” has been modified for use on drum shells. In this procedure, the soft areas in the wood grain are sanded and then the whole shell is coated with a thin layer of black paint. The entire surface of the shell is then sanded again before the final coating is applied, in a process that emphasizes the natural beauty of the Oak grain.



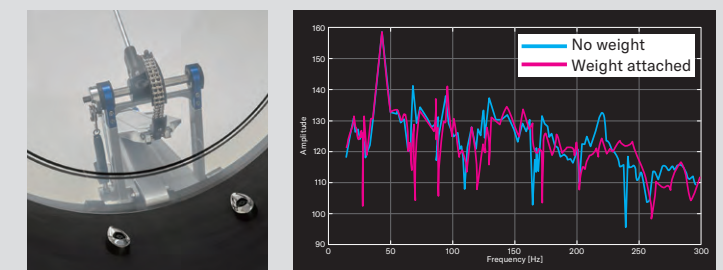
Oak / Phenolic Sheet Hybrid Shell (US PT. 10,418,006)

The Live Custom Hybrid Oak shell is a 6-ply design with a highly dense and elastic phenolic core sheet sandwiched between plies of Oak. This concept is inherited from our flagship PHX and Absolute Hybrid Maple. Always a pioneer in the field of Oak drums, Yamaha has enhanced the dynamic range of the new Live Custom kits by accentuating their attack and projection.



Bass Enhancement Weights (US PT. 11,114,071)

Yamaha's relentless search for a sound with greater power has resulted in Bass Enhancement Weights. Positioning the weights inside of the bass drum lugs delivers tight, low-end tone without compromising the drum's natural sound. This system emphasizes the low-end while attenuating unwanted mid-frequencies.



Features



Dark Silver Hardware and Black Finished Shell Interiors
Dark Silver hardware delivers a dominating image further heightened with the all black shell interiors.



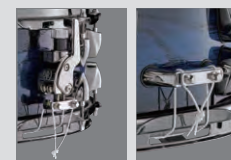
Absolute Lugs
Absolute Lugs reduces surface contact allowing the shell to resonate freely while accommodates high-tension tuning. Absolute lugs also feature the Lug Nut Hold Plate inside of the lug, which acts as a locking mechanism to prevent tuning bolts from loosening.



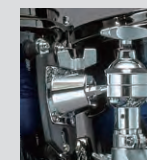
Die-Cast Bass Drum Hooks
Bass drums feature designed die-cast hooks, which provide noise free function through the use of an insertion plate.



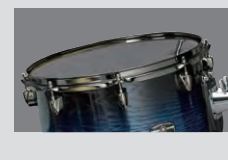
Floor Tom Brackets
Floor Tom bracket includes wing bolts. It's designed to clamp tightly on the leg without damaging it, to save time on stage, and to deliver optimum decay control.



Q-Type Strainer
The heavy-duty Q-type strainer is robust offering solid and stable operation, along with adjustment and snare replacement.

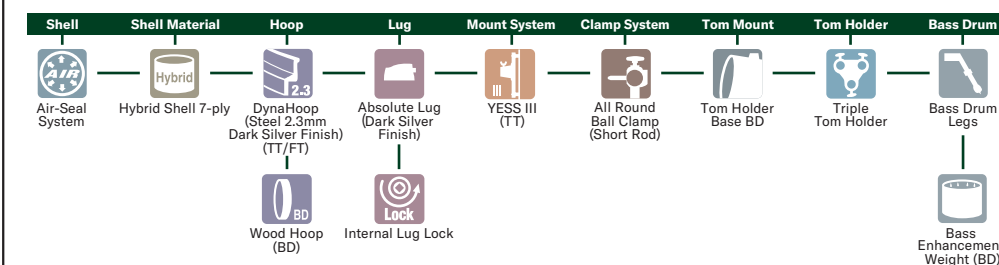


YESS III Mount
The YESS III Tom Mount System is an evolutionary step up from our YESS II-m. The plate section on the YESS III features a multi-layer structure that makes the mount slightly resonate. This allows the shell to vibrate with greater freedom, obtaining a fatter tone and more natural decay from the shell.



2.3mm Dyna Hoop
Thicker steel hoops offer a tighter sound and sharper response.

Live Custom Hybrid Oak



Head	BD 20"	BD 18"	TT/FT
Batter/Top	Yamaha REMO P3 Clear	Yamaha REMO Ambassador Coated	Yamaha REMO Emperor Clear
Front/Bottom	Yamaha REMO P3 Ebony	Yamaha REMO P3 Ebony	Yamaha REMO Ambassador Clear

UZU Ice Sunburst

- **Shells**
LHB2416 LHF1816
LHF1615 LHT1411
- **Snare Drum**
LHS1455
- **Hardware**
CS865 x 4 HS1200
SS850 x 2 FP9C

*Cymbals are not included.



UZU Charcoal Sunburst

- **Shells**
LHB2218
LHP6F3
(LHF1615 LHT1208 LHT1007 TH945B)
- **Snare Drum**
LHS1455
- **Hardware**
CS865 x 3 HS1200
SS850 FP9C

*Cymbals are not included.



UZU Earth Sunburst

- **Shells**
LHB2016
LHP4F3
(LHF1413 LHT1208 LHT1007 TH945B)
- **Snare Drum**
LHS1455
- **Hardware**
HW3 (CS3 x 2, HHS3, SS3)
CS3 FP7210A

*Cymbals are not included.



UZU Natural

- **Shells**
LHB1814 LHF1413 LHT1208
- **Snare Drum**
LHS1455
- **Hardware**
HW3 (CS3 x 2, HHS3, SS3)
CL945LB FP7210A

*Cymbals are not included.



Snare Drums

LHS1455
Size 14" x 5.5"



Color Finishes



UZU Ice Sunburst (UIS)



UZU Magma Sunburst (UMS)



UZU Natural (UNT)



UZU Earth Sunburst (UES)



UZU Charcoal Sunburst (UCS)

Natural colors found in UZUKURI finishes may vary depending upon the character and grain of the shell's wood.

Components

	Bass Drum					Floor Tom				Tom Tom				Snare Drum
Diameter	24"	22"	22"	20"	18"	18"	16"	14"	14"	13"	12"	10"	8"	14"
x Depth	16"	18"	16"	16"	14"	16"	15"	13"	11"	9"	8"	7"	7"	5.5"
Model No.	LHB2416	LHB2218	LHB2216	LHB2016	LHB1814	LHF1816	LHF1615	LHF1413	LHT1411	LHT1309	LHT1208	LHT1007	LHT0807	LHS1455

(Unit: inch)

Tom Packages

	Floor Tom	Tom Tom		Tom Holder
LHP6F3	LHF1615	LHT1208	LHT1007	TH945B
LHP4F3	LHF1413	LHT1208	LHT1007	TH945B