

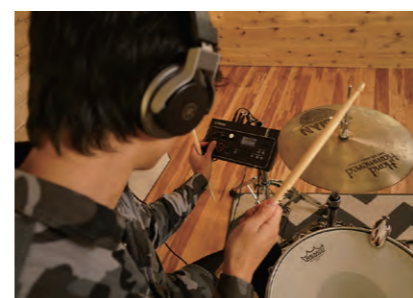
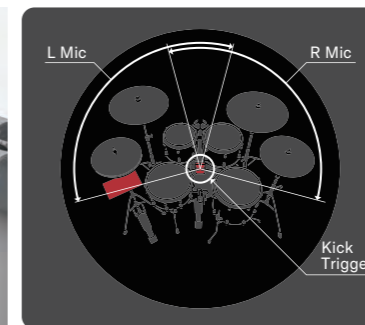


Mic Your Drum in Seconds

Hear your acoustic Drums in the headphones/speaker and you control the volume. From the use of iOS / Android App "Rec'n'Share", you can record with your favorite bands and create great-sounding videos and easily share on social.



Mechanism



The Sensor Unit

The sensor unit of the EAD10 comprises a specially developed XY stereo microphone sensor and trigger sensors, allowing you to capture a balanced recording of the sound of the entire kit by placing this at the center of the kit itself. Additionally, the range of sounds that can be created has been greatly expanded by using the trigger sensor to combine bass drum sounds with a PCM sound source.

The EAD10 has achieved both simplicity and quality by combining the technologies that could only be developed by a comprehensive manufacturer well versed in both the characteristics of instruments and microphones.

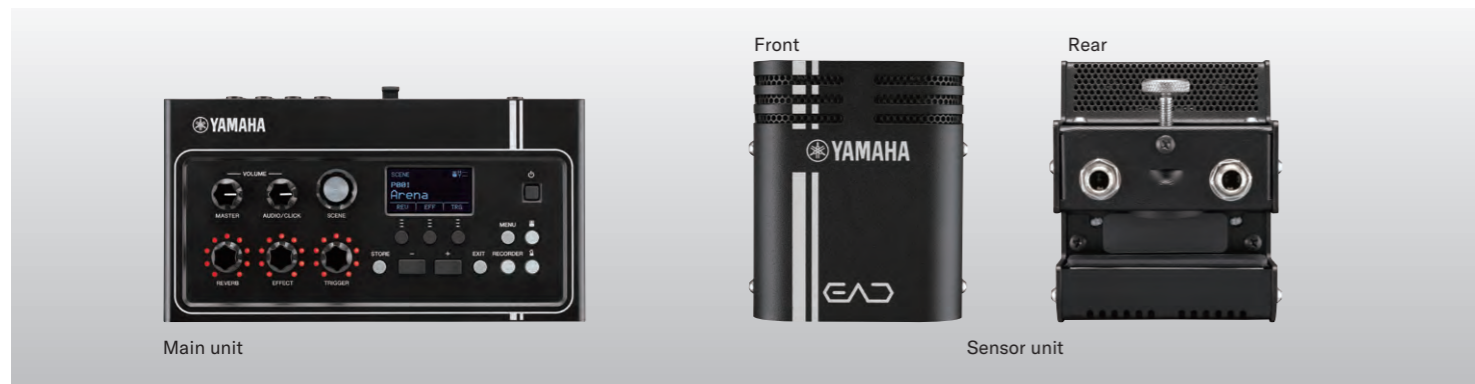
The Main Unit

The main unit of EAD10 is designed with ease of use in mind. The left side of the main unit comes equipped with large knobs that can easily be adjusted mid-performance, so that the main control functions can be accessed easily. The buttons and LCD display on the right allow for even more detailed adjustments.

Additionally, a high-performance headphone amplifier was also developed specifically for this unit, and delivers power and performance that cannot be outdone by the dynamic sounds of acoustic drums.

It also comes equipped with many high-quality effects and PCM sound sources used in Yamaha electronic musical instruments. Furthermore, by using the trigger sensing technology from electronic drums, it creates added value for acoustic drums, making them into a completely new musical instrument.

Product



Main unit

Sensor unit

EAD10 Specifications

Size/Weight		
Dimensions	Width	260mm (Main Unit), 76mm (Sensor Unit)
	Height	63mm (Main Unit), 88mm (Sensor Unit)
	Depth	138mm (Main Unit), 78mm (Sensor Unit)
Weight	Weight	654g (Main Unit), 464g (Sensor Unit)
Tone generator		
Scenes	Preset: 50 User: 200	
Reverb	11	
Effects	Mic: 21, Trigger: 10	
Trigger Sounds	Tone generator	AWM2
	Maximum polyphony	64
	Voices	757
Recorder		
Recording time	Internal memory	Approx. 1 min 30 sec
	USB flash drive	Approx. 90 min/file
Recording Format	Record/playback	WAV (44.1 kHz, 16 bit, stereo)
Audio Files		
Import limit	Up to 100	
Playback sample format	44.1 kHz	
Wave memory	32 MB	
Maximum loadable sample size	1 mono sample: 1.75 MB, 1 stereo sample: 3.5 MB	
Sample format	WAV (16 bit)	

Click-track		
Tempo	30-300 BPM, tap tempo function	
Time signatures	1/4 to 16/4, 1/8 to 16/8, 1/16 to 16/16	
Subdivisions	Accents, quarter notes, eighth notes, sixteenth notes, and eighth-note triplets	
Functions		
Functions	Trigger sensitivity adjustment, USB audio/MIDI, headphone EQ, Metronome, Auto Power off	
Connectors		
Connectors	DC IN (12 V), PHONES (standard stereo phone), AUX IN (stereo mini), OUTPUT L/MONO, R (standard mono phone), USB TO DEVICE, USB TO HOST	
Sensor Unit	For Trigger sensor	A (standard stereo phone)
	For Mic sensor	B (standard stereo phone)
Trigger input	Stereo (L: trigger, R: trigger)	1 KICK/2 (also serves as A), 3 SNARE/4 (standard stereo phone)
	Three-zone (L: trigger, R: rim switch)	5, 6 (standard stereo phone)
Foot Pedal	FOOT SW (standard stereo phone)	
Sensor outputs	For Trigger sensor	A (standard phone)
	For Mic sensor	B (standard stereo phone)
Sensor Types		
Microphone	High SPL mic × 2	
Trigger	Exclusive for bass drum × 1	
Other		
Included Accessories	Owner's Manual, PA-150 (or an equivalent recommended by Yamaha)*, Module holder, Module holder wing bolts (× 2), Connector cables (1 pair), Cable bands (× 3), Adhesive cushions (× 2)	

Features

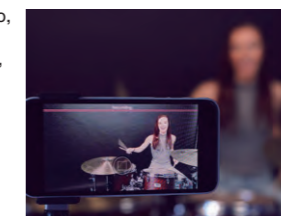
Mic your Drum kit in seconds

EAD10 can capture the sounds of an entire drum kit and monitor them at a high quality just by attaching the sensor unit to the bass drum. By simply turning the knob on the main unit, you can control various effects and change the drum sound as you wish. If a speaker is connected to the EAD10 output terminal, it can be used as a simple PA system. You won't have to spend time mic-ing drums during live performance.



Connect with smart device / App

EAD10 can be played with your favorite music on smart devices via AUX cable or USB cable connections. In addition, by using the Android/iOS App "Rec'n'Share", you can practice by adding a metronome to your favorite music, record audio, record video, edit, and upload to SNS, etc.



Add Trigger & Pad

EAD10 can connect to a maximum of 6 triggers and pads including the bass drum trigger of the sensor unit. Percussion sounds, electronic sounds, and loops, among other things, can be incorporated to expand the range of expression.



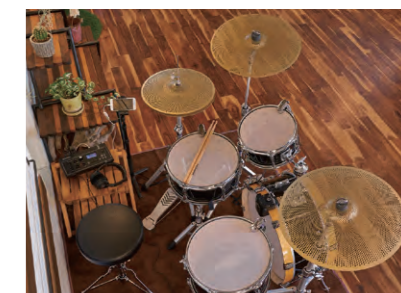
Talkback function

EAD10 features a talkback function. A player's voice can be captured by the microphone sensor of the unit sensor by operating the buttons on the main unit, or by using the pedal. This function can be used in various circumstances, including video creation and web lessons.



Use EAD10 with a mesh drum kit

Combining EAD10 with a low-volume drum kit using mesh heads and low-volume cymbals leads to the birth of an entirely new drum kit. Playing PCM sound with triggers attached to each drum and capturing raw sounds, including those of cymbals from the microphone sensor of the sensor unit, allows the raw sound of the drums themselves to be kept at a low volume while realistic drum sounds are output through the headphones and speakers. Settings that resemble that of a real drum kit lend themselves to the production of a performance that feels more real than ever before.



iOS / Android App Rec'n'Share



Price: free
Work with: EAD10/DTX series
Stand alone: Only practice functions usable
Device: iPhone, iPad, Android devices



Music Video Made Easy

Connect a compatible Yamaha Product to your smart phone/tablet to simultaneously record video from your phone's camera, stereo digital audio from your Yamaha product and stereo backing tracks from your music library.

Enrich Your Practice

Pick a song from your music library and the app's tempo detection lets you add a click, change the tempo and select sections to repeat. Audio Track Separation function allows you to adjust the volume of specific tracks (vocals, drums, bass, etc.) of your favorite songs.

